

Les composants de transmission

Components



Un vaste choix de produits de qualité et un stock très important en France des composants de transmission.

Une gamme complète :

- Galets de roulement.
- Galets à aiguilles.
- Embouts à rotule en acier ou inox.

Depuis 2009, nous consolidons notre savoir faire dans le domaine de la production des embouts à rotule en mettant en place un stock de produits en inox. De plus, nous avons structuré le service pour répondre aux demandes de fabrications particulières selon un cahier des charges défini par le client. Aujourd'hui, nous disposons d'une gamme très importante allant des produits standard du marché en passant par des produits de précision sans jeu ou avec précharge.

La puissance de notre stock et le dynamisme de notre société nous permettent de livrer très rapidement l'ensemble de nos clients en France et à l'international.

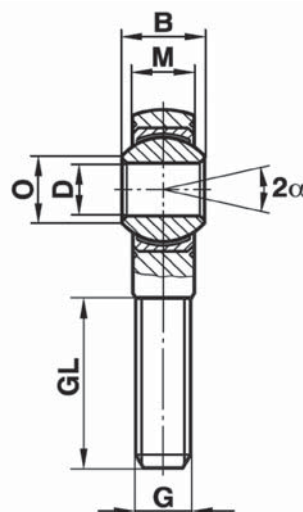
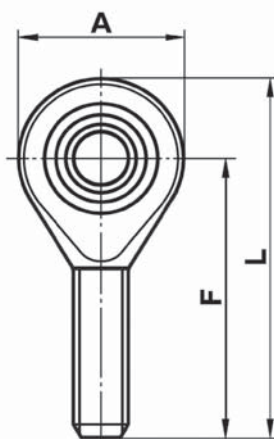
EMBOUS A ROTULE - ROD ENDS



Type BNM..K pas à droite



BNML..K pas à gauche

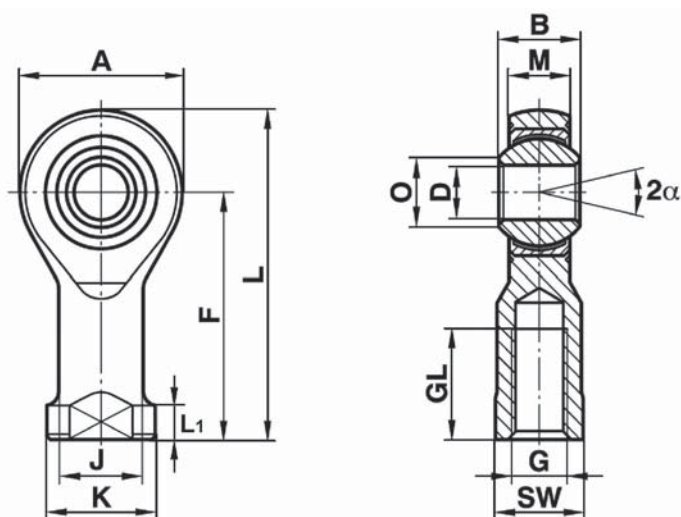


| Référence Type | Dimensions - mm | | | | | | | | | | Charge - Basic load N | | Poids Weight g |
|-------------------|-----------------|----|----|-------|----------|-----|----|-----|------|----|--------------------------|-------------|----------------------|
| | D | A | B | M | G | F | GL | L | O | α° | Dyn. Cd | Stat. Cs | |
| BNM5K | 5 | 18 | 8 | 6.00 | M5x0.80 | 33 | 19 | 42 | 7.7 | 4 | 4.000 | 7.500 | 13 |
| BNM6K | 6 | 20 | 9 | 6.75 | M6x1.00 | 36 | 22 | 46 | 8.9 | 9 | 4.400 | 9.300 | 20 |
| BNM8K | 8 | 24 | 12 | 9.00 | M8x1.25 | 42 | 25 | 54 | 10.4 | 13 | 8.000 | 16.700 | 33 |
| BNM10K | 10 | 28 | 14 | 10.50 | M10x1.50 | 48 | 29 | 62 | 12.9 | 13 | 12.900 | 23.400 | 56 |
| BNM12K | 12 | 32 | 16 | 12.00 | M12x1.75 | 54 | 33 | 70 | 15.4 | 13 | 17.000 | 32.000 | 87 |
| BNM14K | 14 | 36 | 19 | 13.50 | M14x2.00 | 60 | 38 | 78 | 16.8 | 13 | 24.000 | 41.900 | 129 |
| BNM16K | 16 | 42 | 21 | 15.00 | M16x2.00 | 66 | 40 | 87 | 19.3 | 13 | 28.500 | 52.700 | 189 |
| BNM18K | 18 | 46 | 23 | 16.50 | M18x1.50 | 72 | 44 | 95 | 21.8 | 13 | 35.000 | 63.800 | 267 |
| BNM20K | 20 | 50 | 25 | 18.00 | M20x1.50 | 78 | 47 | 103 | 24.3 | 13 | 40.000 | 78.100 | 348 |
| BNM22K | 22 | 54 | 28 | 20.00 | M22x1.50 | 84 | 51 | 111 | 25.8 | 13 | 52.000 | 97.200 | 443 |
| BNM25K | 25 | 60 | 31 | 22.00 | M24x2.00 | 94 | 58 | 124 | 29.6 | 13 | 60.000 | 122.100 | 600 |
| BNM30K | 30 | 70 | 37 | 25.00 | M30x2.00 | 110 | 71 | 145 | 34.8 | 13 | 81.000 | 168.400 | 1.030 |

BNML-K : Pas à gauche *Left hand*
BNM-K : Pas à droite *Right hand*

Sans maintenance - Maintenance free

| | | | |
|-----------------|---------------|---|--|
| Corps | <i>Body</i> | Acier carbone, revêtement nickel | <i>Low carbon steel, nickel plated</i> |
| Bille | <i>Ball</i> | 100 Cr6 - Bille chromée | <i>Ball chromium steel</i> |
| Logement | <i>Insert</i> | Bronze (H62) et revêtement PTFE | <i>Brass with inner surface PTFE</i> |

Type **BNF..K** pas à droite**BNFL..K** pas à gauche

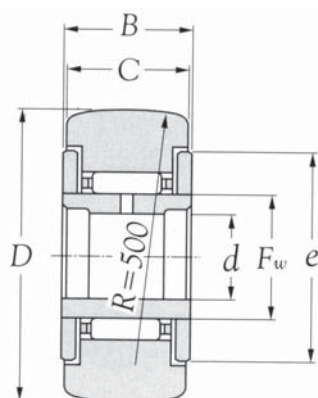
| Référence Type | Dimensions - mm | | | | | | | | | | | | | | Charge - Basic load N | | Poids Weight g |
|-------------------|-----------------|----|----|-------|----|----------|------|----|-----|----|----------------|-----|------|----|--------------------------|-------------|----------------------|
| | D | A | B | M | SW | G | J | K | F | GL | L ₁ | L | O | α° | Dyn. Cd | Stat. Cs | |
| BNF5K | 5 | 18 | 8 | 6.00 | 9 | M5x0.80 | 9.0 | 11 | 27 | 10 | 4.5 | 36 | 7.7 | 13 | 6.000 | 7.500 | 18 |
| BNF6K | 6 | 20 | 9 | 6.75 | 11 | M6x1.00 | 10.0 | 13 | 30 | 12 | 5.0 | 40 | 8.9 | 13 | 7.200 | 9.300 | 27 |
| BNF8K | 8 | 24 | 12 | 9.00 | 13 | M8x1.25 | 12.5 | 16 | 36 | 16 | 5.0 | 48 | 10.4 | 13 | 11.600 | 16.700 | 46 |
| BNF10K | 10 | 28 | 14 | 10.50 | 17 | M10x1.50 | 15.0 | 19 | 43 | 20 | 6.5 | 57 | 12.9 | 13 | 14.500 | 23.400 | 76 |
| BNF10.1K | 10 | 28 | 14 | 10.50 | 17 | M10x1.25 | 15.0 | 19 | 43 | 20 | 6.5 | 57 | 12.9 | 13 | 14.500 | 23.400 | 76 |
| BNF12K | 12 | 32 | 16 | 12.00 | 19 | M12x1.75 | 17.5 | 22 | 50 | 22 | 6.5 | 66 | 15.4 | 13 | 17.000 | 32.000 | 115 |
| BNF12.1K | 12 | 32 | 16 | 12.00 | 19 | M12x1.25 | 17.5 | 22 | 50 | 22 | 6.5 | 66 | 15.4 | 13 | 17.000 | 32.000 | 115 |
| BNF14K | 14 | 36 | 19 | 13.50 | 22 | M14x2.00 | 20.0 | 25 | 57 | 25 | 8.0 | 75 | 16.8 | 13 | 24.000 | 41.900 | 170 |
| BNF16K | 16 | 42 | 21 | 15.00 | 22 | M16x2.00 | 22.0 | 27 | 64 | 28 | 8.0 | 85 | 19.3 | 13 | 28.500 | 52.700 | 230 |
| BNF16.1K | 16 | 42 | 21 | 15.00 | 22 | M16x1.50 | 22.0 | 27 | 64 | 28 | 8.0 | 85 | 19.3 | 13 | 28.500 | 52.700 | 230 |
| BNF18K | 18 | 46 | 23 | 16.50 | 27 | M18x1.50 | 25.0 | 31 | 71 | 32 | 10.0 | 94 | 21.8 | 13 | 35.000 | 63.800 | 320 |
| BNF20K | 20 | 50 | 25 | 18.00 | 32 | M20x1.50 | 27.5 | 34 | 77 | 33 | 10.0 | 102 | 24.3 | 13 | 40.000 | 78.100 | 415 |
| BNF22K | 22 | 54 | 28 | 20.00 | 32 | M22x1.50 | 30.0 | 37 | 84 | 37 | 10.0 | 111 | 25.8 | 13 | 52.000 | 97.200 | 540 |
| BNF25K | 25 | 60 | 31 | 22.00 | 36 | M24x2.00 | 33.5 | 42 | 94 | 42 | 12.0 | 124 | 29.6 | 13 | 60.000 | 122.100 | 750 |
| BNF30K | 30 | 70 | 37 | 25.00 | 41 | M30x2.00 | 40.0 | 51 | 110 | 51 | 15.0 | 145 | 34.8 | 13 | 81.000 | 168.400 | 1.130 |

BNFL-K : Pas à gauche *Left hand***BNF-K** : Pas à droite *Right hand***Sans maintenance - Maintenance free****Corps** *Body* **Acier carbone, revêtement nickel** *Low carbon steel, nickel plated***Bille** *Ball* **100 Cr6 - Bille chromée** *Ball chromium steel***Logement** *Insert* **Bronze (H62) et revêtement PTFE** *Brass with inner surface PTFE*

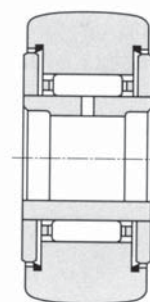
Type NATR



Galets à aiguilles



Type NATR



Type NATR..LL

| Référence Type | Dimensions - mm | | | | | | Vitesse limite Max. speed tr/min | | Charge - Basic load N | | Poids Weight g |
|-------------------|-----------------|------------------------|------------------------|----|----|------|--|--------------|--------------------------|--------------|----------------------|
| | D 0 / -0.05 | B | C | d | e | Fw | Graisse Grease | Huile Oil | Dyn. Cr | Stat. Cor | |
| | NATR5LL | 16 | 12 ^{0/-0,180} | 11 | 5 | 12 | 8 | 19 000* | 25 000* | 3 850 | 3 950 |
| NATR6LL | 19 | 12 ^{0/-0,180} | 11 | 6 | 14 | 10 | 15 000* | 20 000* | 4 500 | 5 100 | 25 |
| NATR8LL | 24 | 15 ^{0/-0,180} | 14 | 8 | 19 | 12 | 12 000* | 16 000* | 6 600 | 7 300 | 42 |
| NATR10LL | 30 | 15 ^{0/-0,180} | 14 | 10 | 23 | 15 | 10 000 | 13 000* | 7 500 | 9 100 | 61 |
| NATR12LL | 32 | 15 ^{0/-0,180} | 14 | 12 | 25 | 17 | 9 000 | 12 000* | 8 500 | 11 100 | 69 |
| NATR15LL | 35 | 19 ^{0/-,210} | 18 | 15 | 27 | 20 | 7 500 | 10 000 | 13 000 | 20 100 | 98 |
| NATR17LL | 40 | 21 ^{0/-0,210} | 20 | 17 | 32 | 22 | 7 000 | 9 000 | 13 600 | 22 100 | 140 |
| NATR20LL | 47 | 25 ^{0/-0,210} | 24 | 20 | 37 | 25 | 6 000 | 8 000 | 20 300 | 33 000 | 246 |
| NATR25LL | 52 | 25 ^{0/-0,210} | 24 | 25 | 42 | 30 | 5 000 | 6 500 | 22 300 | 39 500 | 275 |
| NATR30LL | 62 | 29 ^{0/-0,210} | 28 | 30 | 51 | 38 | 4 000 | 5 500 | 35 000 | 64 000 | 470 |
| NATR35LL | 72 | 29 ^{0/0,210} | 28 | 35 | 58 | 44,5 | 3 300 | 4 500 | 38 000 | 74 500 | 635 |
| NATR40LL | 80 | 32 ^{0/-0,250} | 30 | 40 | 66 | 50 | 3 000 | 4 000 | 48 500 | 90 000 | 875 |
| NATR45LL | 85 | 32 ^{0/-0,250} | 30 | 45 | 71 | 55 | 2 700 | 3 600 | 50 500 | 97 500 | 910 |
| NATR50LL | 90 | 32 ^{0/-0,250} | 30 | 50 | 76 | 60 | 2 500 | 3 300 | 52 000 | 105 000 | 960 |

* La vitesse limite avec des galets avec joints à lèvres est approximativement 10 000 tr/min.

Notes : Limiting speed of sealed type bearings marked with* is approximately 10 000 rpm.

Exemple de désignation

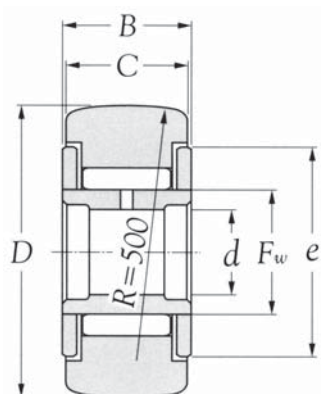
NATR 12 LL

Type

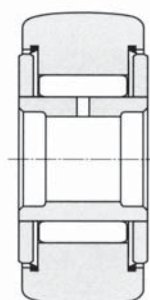
Dimensions Dimension code

Joint d'étanchéité Seal code

Type NATV



Type NATV



Type NATV..LL



Galets à aiguilles

| Référence Type | Dimensions - mm | | | | | | Vitesse limite Max. speed tr/min | | Charge - Basic load N | | Poids Weight g |
|-------------------|------------------------|-------------------------------------|----|----|----|------|--|--------------|--------------------------|--------------|----------------------|
| | D ⁰ / -0.05 | B | C | d | e | Fw | Graisse Grease | Huile Oil | Dyn. Cr | Stat. Cor | |
| NATV5LL | 16 | 12 ⁰ / _{-0,180} | 11 | 5 | 12 | 8 | 13 000* | 16 000* | 6 250 | 8 900 | 20 |
| NATV6LL | 19 | 12 ⁰ / _{-0,180} | 11 | 6 | 14 | 10 | 10 000 | 13 000* | 7 200 | 11 200 | 27 |
| NATV8LL | 24 | 15 ⁰ / _{-0,180} | 14 | 8 | 19 | 12 | 8 500 | 11 000* | 10 300 | 15 500 | 44 |
| NATV10LL | 30 | 15 ⁰ / _{-0,180} | 14 | 10 | 23 | 15 | 6 500 | 8 500 | 11 700 | 19 500 | 65 |
| NATV12LL | 32 | 15 ⁰ / _{-0,180} | 14 | 12 | 25 | 17 | 6 000 | 7 500 | 12 600 | 22 100 | 74 |
| NATV15LL | 35 | 19 ⁰ / _{-0,210} | 18 | 15 | 27 | 20 | 5 000 | 6 500 | 18 000 | 37 000 | 102 |
| NATV17LL | 40 | 21 ⁰ / _{-0,210} | 20 | 17 | 32 | 22 | 4 500 | 6 000 | 18 900 | 40 500 | 145 |
| NATV20LL | 47 | 25 ⁰ / _{-0,210} | 24 | 20 | 37 | 25 | 4 000 | 5 000 | 28 400 | 60 000 | 254 |
| NATV25LL | 52 | 25 ⁰ / _{-0,210} | 24 | 25 | 42 | 30 | 3 300 | 4 500 | 31 000 | 72 000 | 285 |
| NATV30LL | 62 | 29 ⁰ / _{-0,210} | 28 | 30 | 51 | 38 | 2 600 | 3 500 | 46 500 | 112 000 | 481 |
| NATV35LL | 72 | 29 ⁰ / _{-0,210} | 28 | 35 | 58 | 44,5 | 2 200 | 2 900 | 51 000 | 130 000 | 647 |
| NATV40LL | 80 | 32 ⁰ / _{-0,250} | 30 | 40 | 66 | 50 | 2 000 | 2 600 | 67 500 | 167 000 | 890 |
| NATV50LL | 90 | 32 ⁰ / _{-0,250} | 30 | 50 | 76 | 60 | 1 600 | 2 100 | 74 500 | 200 000 | 990 |

* La vitesse limite avec des galets avec joints à lèvres est approximativement 10 000 tr/min.

Notes : Limiting speed of sealed type bearings marked with* is approximately 10 000 rpm.

Exemple de désignation

NATV 12 LL

Type

Dimensions

Dimension code

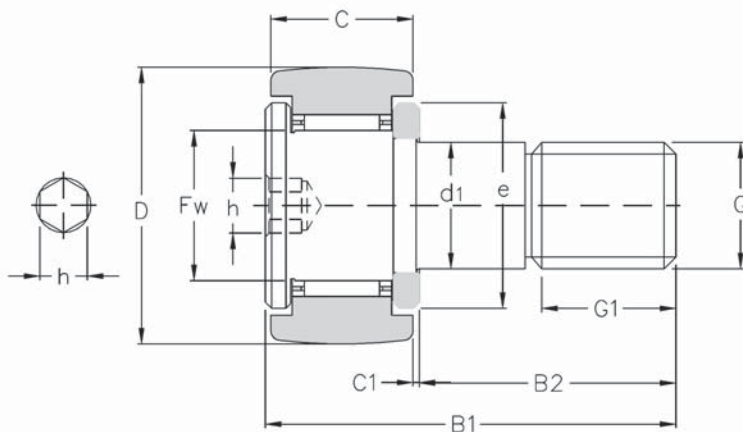
Joint d'étanchéité

Seal code

Type KR



Galets à aiguilles



Type KR(16~19)

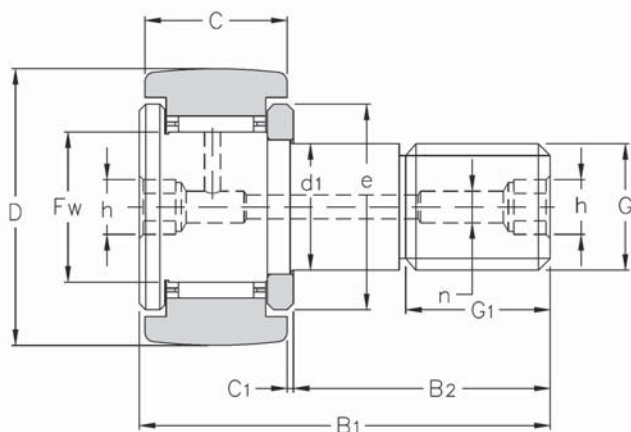
| Référence Type | Dimensions - mm | | | | | | | | | | | | | |
|-------------------|-----------------|----|------------------------|-------|-----|------|---------|------|-----|---|----|---|------|---|
| | D 0 / -0.05 | C | d1 | Fw | B1 | B2 | G | G1 | C1 | n | B3 | a | e | h |
| KR16LL | 16 | 11 | 6 ^{0/-0,012} | 8,00 | 28 | 16,0 | M6x1,0 | 8,0 | 0,6 | 4 | - | - | 12,0 | 4 |
| KR19LL | 19 | 11 | 8 ^{0/-0,015} | 10,00 | 32 | 20,0 | M8x1,25 | 10,0 | 0,6 | 4 | - | - | 14,0 | 4 |
| KR22LL | 22 | 12 | 10 ^{0/-0,015} | 12,00 | 36 | 23,0 | M10x1,0 | 12,0 | 0,6 | 4 | - | - | 17,0 | 5 |
| KR26LL | 26 | 12 | 10 ^{0/-0,015} | 12,00 | 36 | 23,0 | M10x1,0 | 12,0 | 0,6 | 4 | - | - | 17,0 | 5 |
| KR30LL | 30 | 14 | 12 ^{0/-0,018} | 15,00 | 40 | 25,0 | M12x1,5 | 13,0 | 0,6 | 6 | 6 | 3 | 23,0 | 6 |
| KR32LL | 32 | 14 | 12 ^{0/-0,018} | 15,00 | 40 | 25,0 | M12x1,5 | 13,0 | 0,6 | 6 | 6 | 3 | 23,0 | 6 |
| KR35LL | 35 | 18 | 16 ^{0/-0,018} | 18,00 | 52 | 32,5 | M16x1,5 | 17,0 | 0,8 | 6 | 8 | 3 | 27,0 | 8 |
| KR40LL | 40 | 20 | 18 ^{0/-0,018} | 22,00 | 58 | 36,5 | M18x1,5 | 19,0 | 0,8 | 6 | 8 | 3 | 32,0 | 8 |
| KR47LL | 47 | 24 | 20 ^{0/-0,021} | 25,00 | 66 | 40,5 | M20x1,5 | 21,0 | 0,8 | 8 | 9 | 4 | 37,0 | 8 |
| KR52LL | 52 | 24 | 20 ^{0/-0,021} | 25,00 | 66 | 40,5 | M20x1,5 | 21,0 | 0,8 | 8 | 9 | 4 | 37,0 | 8 |
| KR62LL | 62 | 29 | 24 ^{0/-0,021} | 30,00 | 80 | 49,5 | M24x1,5 | 25,0 | 0,8 | 8 | 11 | 4 | 44,0 | 8 |
| KR72LL | 72 | 29 | 24 ^{0/-0,021} | 30,00 | 80 | 49,5 | M24x1,5 | 25,0 | 0,8 | 8 | 11 | 4 | 44,0 | 8 |
| KR80LL | 80 | 35 | 30 ^{0/-0,021} | 38,00 | 100 | 63,0 | M30x1,5 | 32,0 | 1,0 | 8 | 15 | 4 | 53,0 | 8 |
| KR90LL | 90 | 35 | 30 ^{0/-0,021} | 38,00 | 100 | 63,0 | M30x1,5 | 32,0 | 1,0 | 8 | 15 | 4 | 53,0 | 8 |

R = 500

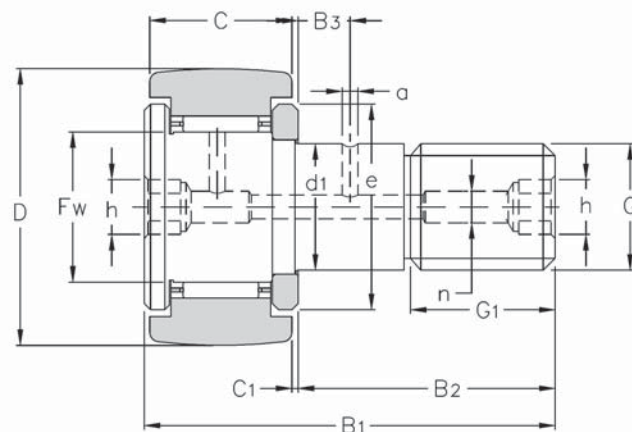
Exemple de désignation

| | | | |
|--------------------|----------------|----|----|
| Type | KR | 16 | LL |
| Dimensions | Dimension code | | |
| Joint d'étanchéité | Seal code | | |

GALETS A AIGUILLES - CAM FOLLOWERS



Type KR(22~26)



Type KR(30~90)

| Référence Type | Vitesse limite - Max. speed tr/min | | Charge - Basic load N | | Couple de serrage max. Maximum tightening torque | Poids Weight |
|-------------------|---------------------------------------|-------------|--------------------------|--------------|---|-----------------|
| | Graisse - Grease | Huile - Oil | Dyn. Cr | Stat. Cor | | |
| | | | | | N.m | g |
| KR16LL | 19 000* | 25 000* | 3 850 | 3 950 | 3,0 | 19 |
| KR19LL | 15 000* | 20 000* | 4 500 | 5 100 | 8,0 | 31 |
| KR22LL | 12 000* | 16 000* | 5 050 | 6 250 | 15,0 | 46 |
| KR26LL | 12 000* | 16 000* | 5 050 | 6 250 | 15,0 | 59 |
| KR30LL | 10 000 | 13 000* | 7 500 | 9 100 | 22,0 | 87 |
| KR32LL | 10 000 | 13 000* | 7 500 | 9 100 | 22,0 | 97 |
| KR35LL | 8 000 | 11 000* | 11 800 | 17 300 | 58,0 | 169 |
| KR40LL | 7 000 | 9 000 | 13 600 | 22 100 | 87,0 | 248 |
| KR47LL | 6 000 | 8 000 | 20 300 | 33 000 | 120,0 | 386 |
| KR52LL | 6 000 | 8 000 | 20 300 | 33 000 | 120,0 | 461 |
| KR62LL | 5 000 | 6 500 | 29 100 | 55 000 | 220,0 | 790 |
| KR72LL | 5 000 | 6 500 | 29 100 | 55 000 | 220,0 | 1 040 |
| KR80LL | 4 000 | 5 500 | 44 000 | 86 500 | 450,0 | 1 550 |
| KR90LL | 4 000 | 5 500 | 44 000 | 86 500 | 450,0 | 1 950 |

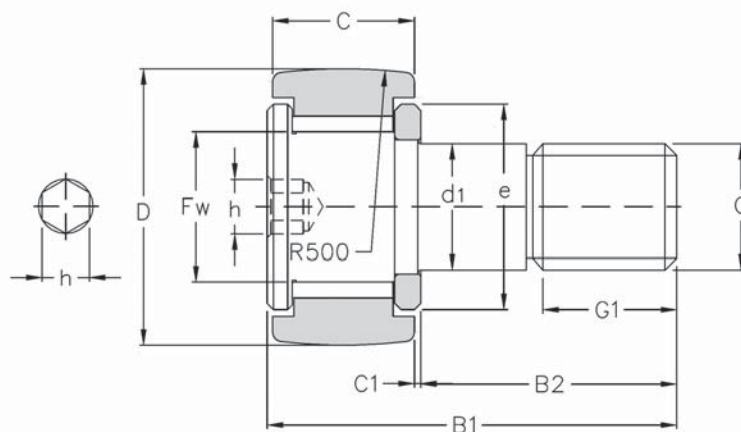
* La vitesse limite avec des galets avec joints à lèvre est approximativement 10 000 tr/min.

Notes : Limiting speed of sealed type bearings marked with* is approximately 10 000 rpm.

Type KRV



Galets à aiguilles jointives



Type KRV(16~19)

| Référence Type | Dimensions - mm | | | | | | | | | | | | | |
|-------------------|-----------------|----|------------------------|-------|-----|------|---------|------|-----|---|----|---|------|----|
| | D 0 / -0.05 | C | d1 | Fw | B1 | B2 | G | G1 | C1 | n | B3 | a | e | h |
| KRV16LL | 16 | 11 | 6 ^{0/-0,012} | 8,00 | 28 | 16,0 | M6x1,0 | 8,0 | 0,6 | 4 | - | - | 12,0 | 3 |
| KRV19LL | 19 | 11 | 8 ^{0/-0,015} | 10,00 | 32 | 20,0 | M8x1,25 | 10,0 | 0,6 | 4 | - | - | 14,0 | 4 |
| KRV22LL | 22 | 12 | 10 ^{0/-0,015} | 12,00 | 36 | 23,0 | M10x1 | 12,0 | 0,6 | 4 | - | - | 17,0 | 5 |
| KRV26LL | 26 | 12 | 10 ^{0/-0,015} | 12,00 | 36 | 23,0 | M10x1 | 12,0 | 0,6 | 4 | - | - | 17,0 | 5 |
| KRV30LL | 30 | 14 | 12 ^{0/-0,018} | 15,00 | 40 | 25,0 | M12x1,5 | 13,0 | 0,6 | 6 | 6 | 3 | 23,0 | 6 |
| KRV32LL | 32 | 14 | 12 ^{0/-0,018} | 15,00 | 40 | 25,0 | M12x1,5 | 13,0 | 0,6 | 6 | 6 | 3 | 23,0 | 6 |
| KRV35LL | 35 | 18 | 16 ^{0/-0,018} | 18,00 | 52 | 32,5 | M16x1,5 | 17,0 | 0,8 | 6 | 8 | 3 | 27,0 | 8 |
| KRV40LL | 40 | 20 | 18 ^{0/-0,018} | 22,00 | 58 | 36,5 | M18x1,5 | 19,0 | 0,8 | 6 | 8 | 3 | 32,0 | 8 |
| KRV47LL | 47 | 24 | 20 ^{0/-0,021} | 25,00 | 66 | 40,5 | M20x1,5 | 21,0 | 0,8 | 8 | 9 | 4 | 37,0 | 10 |
| KRV52LL | 52 | 24 | 20 ^{0/-0,021} | 25,00 | 66 | 40,5 | M20x1,5 | 21,0 | 0,8 | 8 | 9 | 4 | 37,0 | 10 |
| KRV62LL | 62 | 29 | 24 ^{0/-0,021} | 30,00 | 80 | 40,5 | M24x1,5 | 25,0 | 0,8 | 8 | 11 | 4 | 44,0 | 14 |
| KRV72LL | 72 | 29 | 24 ^{0/-0,021} | 30,00 | 80 | 49,5 | M24x1,5 | 25,0 | 0,8 | 8 | 11 | 4 | 44,0 | 14 |
| KRV80LL | 80 | 35 | 30 ^{0/-0,021} | 38,00 | 100 | 63,0 | M30x1,5 | 32,0 | 1,0 | 8 | 15 | 4 | 53,0 | 14 |
| KRV90LL | 90 | 35 | 30 ^{0/-0,021} | 38,00 | 100 | 63,0 | M30x1,5 | 32,0 | 1,0 | 8 | 15 | 4 | 53,0 | 14 |

Exemple de désignation

KRV 16 LL

Type

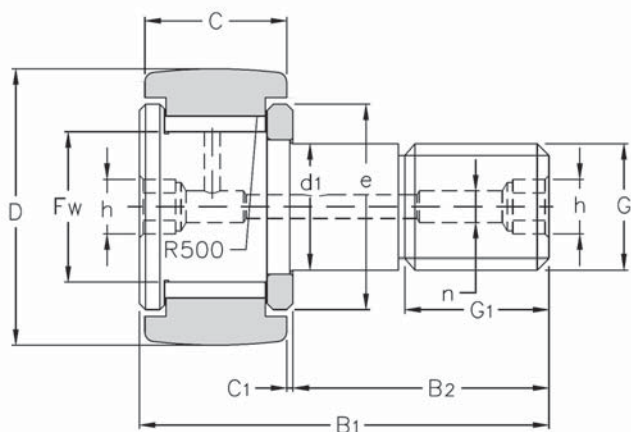
Dimensions

Dimension code

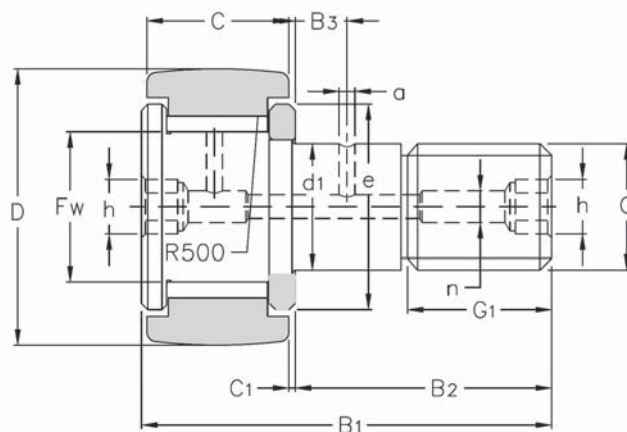
Joint d'étanchéité

Seal code

GALETS A AIGUILLES JOINTIVES - CAM FOLLOWERS



Type KRV(22~26)



Type KRV(30~90)

| Référence Type | Vitesse limite - Max. speed tr/min | | Charge - Basic load N | | Couple de serrage max. Maximum tightening torque | Poids Weight |
|-------------------|---------------------------------------|-------------|--------------------------|--------------|---|-----------------|
| | Graisse - Grease | Huile - Oil | Dyn. Cr | Stat. Cor | | |
| | | | | | N.m | g |
| KRV16LL | 13 000* | 16 000* | 6 250 | 8 900 | 3,0 | 19 |
| KRV19LL | 10 000 | 13 000* | 7 200 | 11 200 | 8,0 | 31 |
| KRV22LL | 8 500 | 11 000* | 7 900 | 13 300 | 15,0 | 46 |
| KRV26LL | 8 500 | 11 000* | 7 900 | 13 300 | 15,0 | 59 |
| KRV30LL | 6 500 | 8 500 | 11 700 | 19 500 | 22,0 | 87 |
| KRV32LL | 6 500 | 8 500 | 11 700 | 19 500 | 22,0 | 97 |
| KRV35LL | 5 500 | 7 000 | 17 200 | 33 000 | 58,0 | 169 |
| KRV40LL | 4 500 | 6 000 | 18 900 | 40 500 | 87,0 | 248 |
| KRV47LL | 4 000 | 5 000 | 28 300 | 60 000 | 120,0 | 386 |
| KRV52LL | 4 000 | 5 000 | 28 300 | 60 000 | 120,0 | 461 |
| KRV62LL | 3 300 | 4 500 | 39 000 | 96 500 | 220,0 | 790 |
| KRV72LL | 3 300 | 4 500 | 39 000 | 96 500 | 220,0 | 1 040 |
| KRV80LL | 3 300 | 3 500 | 57 000 | 144 000 | 450,0 | 1 550 |
| KRV90LL | 2 600 | 3 500 | 57 000 | 144 000 | 450,0 | 1 950 |

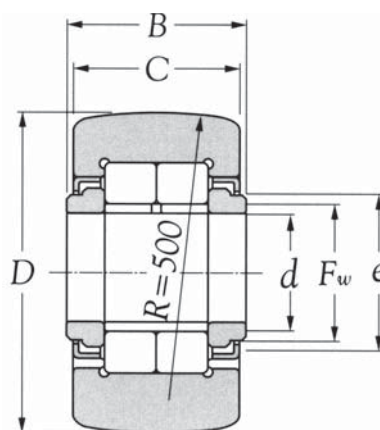
* La vitesse limite avec des galets avec joints à lèvres est approximativement 10 000 tr/min.

Notes : Limiting speed of sealed type bearings marked with* is approximately 10 000 rpm.

Type NUTR



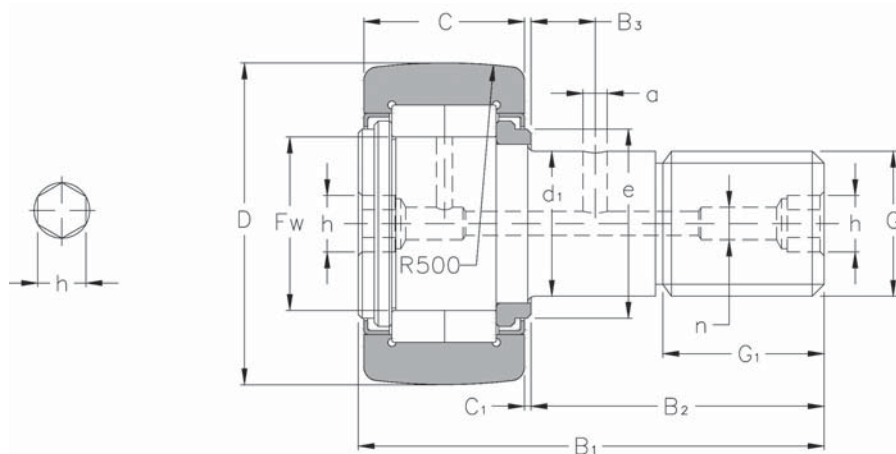
Galets à rouleaux



| Référence Type | Dimensions - mm | | | | | | | Vitesse limite Max. speed tr/min | Charge - Basic load N | | Poids Weight g |
|-------------------|-----------------|------------------------|----|----|----|------|------------|--|--------------------------|------------|----------------------|
| | D 0 / -0.05 | B | C | d | e | Fw | Rs Min* | | Graisse Grease | Dyn. Cr | |
| NUTR202 | 35 | 19 ^{0/-0,210} | 18 | 15 | 20 | 19,0 | 0,3 | 5 500 | 22 300 | 25 700 | 100 |
| NUTR203 | 40 | 21 ^{0/-0,210} | 20 | 17 | 22 | 21,5 | 0,3 | 4 700 | 24 100 | 29 100 | 147 |
| NUTR302 | 42 | 19 ^{0/-0,210} | 18 | 15 | 20 | 19,0 | 0,3 | 5 500 | 22 300 | 25 700 | 160 |
| NUTR303 | 47 | 21 ^{0/-0,210} | 20 | 17 | 22 | 21,5 | 0,3 | 4 700 | 24 100 | 29 100 | 222 |
| NUTR204 | 47 | 25 ^{0/-0,210} | 24 | 20 | 27 | 25,5 | 0,3 | 4 000 | 38 500 | 48 000 | 245 |
| NUTR304 | 52 | 25 ^{0/-0,210} | 24 | 20 | 27 | 25,5 | 0,3 | 4 000 | 38 500 | 48 000 | 321 |
| NUTR205 | 52 | 25 ^{0/-0,210} | 24 | 25 | 31 | 30,0 | 0,3 | 3 300 | 42 500 | 57 500 | 281 |
| NUTR305 | 62 | 25 ^{0/-0,210} | 24 | 25 | 31 | 30,0 | 0,3 | 3 300 | 42 500 | 57 500 | 450 |
| NUTR206 | 62 | 29 ^{0/-0,210} | 28 | 30 | 38 | 35,0 | 0,3 | 2 900 | 56 500 | 72 500 | 466 |
| NUTR306 | 72 | 29 ^{0/-0,210} | 28 | 30 | 38 | 35,0 | 0,3 | 2 900 | 56 500 | 72 500 | 697 |
| NUTR207 | 72 | 29 ^{0/-0,210} | 28 | 35 | 44 | 41,5 | 0,6 | 2 400 | 62 000 | 85 500 | 630 |
| NUTR307 | 80 | 29 ^{0/-0,210} | 28 | 35 | 44 | 41,5 | 0,6 | 2 400 | 62 000 | 85 500 | 840 |
| NUTR208 | 80 | 32 ^{0/-0,250} | 30 | 40 | 51 | 47,5 | 0,6 | 2 100 | 87 000 | 125 000 | 817 |
| NUTR209 | 85 | 32 ^{0/-0,250} | 30 | 45 | 55 | 52,5 | 0,6 | 1 900 | 92 000 | 137 000 | 883 |
| NUTR308 | 90 | 32 ^{0/-0,250} | 30 | 40 | 51 | 47,5 | 0,6 | 2 100 | 87 000 | 125 000 | 1 130 |
| NUTR210 | 90 | 32 ^{0/-0,250} | 30 | 50 | 60 | 57,0 | 0,6 | 1 800 | 96 500 | 150 000 | 950 |
| NUTR309 | 100 | 32 ^{0/-0,250} | 30 | 45 | 55 | 52,5 | 0,6 | 1 900 | 92 000 | 137 000 | 1 400 |
| NUTR310 | 110 | 32 ^{0/-0,250} | 30 | 50 | 60 | 57,0 | 0,6 | 1 800 | 96 500 | 150 000 | 1 690 |

* Dimensions minimum du chanfrein r.

* These values are the allowable minimum dimensions of the chamfer dimension r.



Type NUKR



Galets à rouleaux

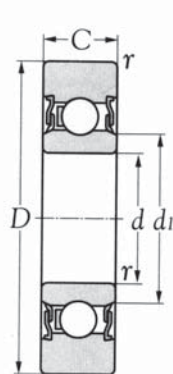
| Référence Type | Dimensions - mm | | | | | | | | | | | | | |
|-------------------|-----------------|----|------------------------|------|-----|------|---------|----|-----|---|----|---|----|----|
| | D 0 / -0.05 | C | d1 | Fw | B1 | B2 | G | G1 | C1 | n | B3 | a | e | h |
| NUKR35 | 35 | 18 | 16 ^{0/-0.018} | 19,0 | 52 | 32,5 | M16x1,5 | 17 | 0,8 | 6 | 8 | 3 | 21 | 8 |
| NUKR40 | 40 | 20 | 18 ^{0/-0.018} | 21,5 | 58 | 36,5 | M18x1,5 | 19 | 0,8 | 6 | 8 | 3 | 23 | 8 |
| NUKR47 | 47 | 24 | 20 ^{0/-0.021} | 25,5 | 66 | 40,5 | M20x1,5 | 21 | 0,8 | 8 | 9 | 4 | 27 | 10 |
| NUKR52 | 52 | 24 | 20 ^{0/-0.021} | 30,0 | 66 | 40,5 | M20x1,5 | 21 | 0,8 | 8 | 9 | 4 | 31 | 10 |
| NUKR62 | 62 | 29 | 24 ^{0/-0.021} | 35,0 | 80 | 49,5 | M24x1,5 | 25 | 0,8 | 8 | 11 | 4 | 38 | 14 |
| NUKR72 | 72 | 29 | 24 ^{0/-0.021} | 41,5 | 80 | 49,5 | M24x1,5 | 25 | 0,8 | 8 | 11 | 4 | 44 | 14 |
| NUKR80 | 80 | 35 | 30 ^{0/-0.021} | 47,5 | 100 | 63,0 | M30x1,5 | 32 | 1,0 | 8 | 15 | 4 | 51 | 14 |
| NUKR90 | 90 | 35 | 30 ^{0/-0.021} | 47,5 | 100 | 63,0 | M30x1,5 | 32 | 1,0 | 8 | 15 | 4 | 51 | 14 |

| Référence Type | Vitesse limite - Max. speed tr/min | Charge - Basic load N | | Couple de serrage max. Maximum tightening torque | Poids Weight |
|-------------------|--|--------------------------|--------------|---|-----------------|
| | Graisse - Grease | Dyn. Cr | Stat. Cor | N.m | g |
| | | | | | |
| NUKR35 | 5 500 | 22 300 | 25 700 | 58 | 165 |
| NUKR40 | 4 700 | 24 100 | 29 100 | 87 | 242 |
| NUKR47 | 4 000 | 38 500 | 48 000 | 120 | 380 |
| NUKR52 | 3 300 | 42 500 | 57 500 | 120 | 450 |
| NUKR62 | 2 900 | 56 500 | 72 500 | 220 | 795 |
| NUKR72 | 2 400 | 62 000 | 85 500 | 220 | 1 010 |
| NUKR80 | 2 100 | 101 000 | 151 000 | 450 | 1 540 |
| NUKR90 | 2 100 | 101 000 | 151 000 | 450 | 1 960 |

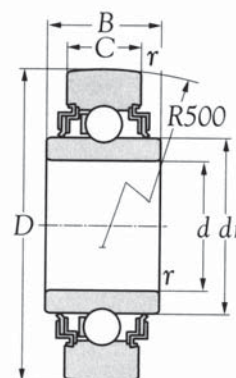
Type LR..NPP



Galets de guidage à billes



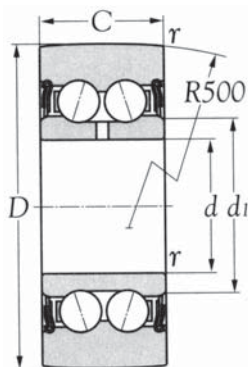
LR..NPP



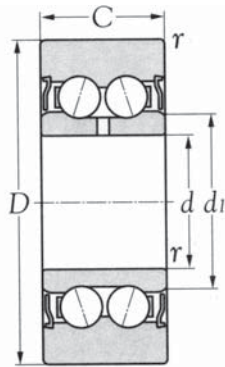
LR..RRU

| Référence Type | Dimensions - mm | | | | | | Vitesse limite Max. speed rpm | Charge basique Basic load N | | Poids Weight |
|-------------------|-----------------|----|----|-----|------|------|-------------------------------------|-----------------------------------|--------|-----------------|
| | d | D | C | rs | d1 | B | Graisse Grease | C | Co | g |
| | | | | | | | | | | |
| LR200NPP | 10 | 32 | 9 | 0,6 | 15,4 | - | 13 000 | 4 200 | 2 050 | 50 |
| LR201NPP | 12 | 35 | 10 | 0,6 | 17,1 | - | 15 000 | 5 500 | 2 600 | 50 |
| LR202NPP | 15 | 40 | 11 | 0,6 | 20,0 | - | 14 000 | 6 700 | 3 150 | 70 |
| LR203NPP | 17 | 47 | 12 | 0,6 | 22,5 | - | 11 000 | 9 100 | 4 200 | 110 |
| LR204NPP | 20 | 52 | 14 | 1,0 | 26,5 | - | 10 000 | 11 800 | 5 400 | 150 |
| LR205NPP | 25 | 62 | 15 | 1,0 | 30,3 | - | 9 000 | 14 900 | 6 800 | 230 |
| LR206NPP | 30 | 72 | 16 | 1,0 | 37,4 | - | 5 500 | 20 800 | 9 200 | 330 |
| LR207NPP | 35 | 80 | 17 | 1,1 | 42,4 | - | 4 500 | 26 100 | 11 400 | 400 |
| LR209NPP | 45 | 90 | 19 | 1,1 | 53,2 | - | 3 600 | 30 300 | 13 100 | 450 |
| LR201RRU | 12 | 35 | 10 | 0,6 | 18,5 | 15,0 | 15 000 | 5 500 | 3 000 | 70 |
| LR202RRU | 15 | 40 | 11 | 0,6 | 21,5 | 14,4 | 14 000 | 6 700 | 3 500 | 80 |

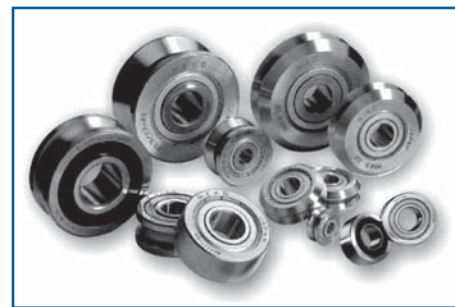
Type LR52..



LR52..NPPU



LR52..KDD



Galets de guidage à double rangées de billes

| Référence Type | Dimensions - mm | | | | | Vitesse limite Max. speed rpm | Charge basique Basic load N | | Poids Weight |
|-------------------|-----------------|----|------|-----|------|-------------------------------------|-----------------------------------|--------|-----------------|
| | d | D | C | rs | d1 | Graisse Grease | C | Co | g |
| LR5200NPPU | 10 | 32 | 14,0 | 0,6 | 15,4 | 8 000 | 6 500 | 3 900 | 70 |
| LR5201NPPU | 12 | 35 | 15,9 | 0,6 | 17,1 | 7 500 | 8 500 | 4 900 | 80 |
| LR5202NPPU | 15 | 40 | 15,9 | 0,6 | 20,0 | 7 000 | 10 100 | 5 900 | 110 |
| LR5203NPPU | 17 | 47 | 17,5 | 0,6 | 22,5 | 5 500 | 13 700 | 7 800 | 170 |
| LR5204NPPU | 20 | 52 | 20,6 | 1,0 | 26,5 | 5 000 | 17 700 | 10 000 | 230 |
| LR5205NPPU | 25 | 62 | 20,6 | 1,0 | 30,3 | 4 500 | 22 000 | 12 400 | 340 |
| LR5206NPPU | 30 | 72 | 23,8 | 1,0 | 37,4 | 3 500 | 30 700 | 20 400 | 510 |
| LR5207NPPU | 35 | 80 | 27,0 | 1,1 | 42,4 | 2 800 | 39 400 | 21 300 | 660 |
| LR5208NPPU | 40 | 85 | 30,2 | 1,1 | 48,4 | 2 500 | 45 500 | 24 300 | 750 |
| LR5200KDD | 10 | 32 | 14,0 | 0,6 | 15,4 | 11 000 | 6 500 | 3 900 | 70 |
| LR5201KDD | 12 | 35 | 15,9 | 0,6 | 17,1 | 10 000 | 8 500 | 4 900 | 80 |
| LR5202KDD | 15 | 40 | 15,9 | 0,6 | 20,0 | 10 000 | 10 100 | 5 900 | 110 |
| LR5203KDD | 17 | 47 | 17,5 | 0,6 | 22,5 | 7 500 | 13 700 | 7 800 | 170 |
| LR5204KDD | 20 | 52 | 20,6 | 1,0 | 26,5 | 7 000 | 17 700 | 10 000 | 230 |
| LR5205KDD | 25 | 62 | 20,6 | 1,0 | 30,3 | 6 500 | 22 000 | 12 400 | 340 |
| LR5206KDD | 30 | 72 | 23,8 | 1,0 | 37,4 | 5 000 | 30 700 | 20 400 | 510 |
| LR5207KDD | 35 | 80 | 27,0 | 1,1 | 42,4 | 3 900 | 39 400 | 21 300 | 660 |
| LR5208KDD | 40 | 85 | 30,2 | 1,1 | 48,4 | 3 500 | 45 500 | 24 300 | 750 |

Exemple de désignation

Type

Dimensions

NPPU : Etanchéité plastique

KDD : Etanchéité tôle

Dimension code

Plastic seal

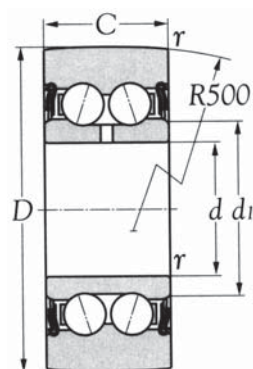
Steel seals

LR 5205 KDD

Type LR53..NPPU

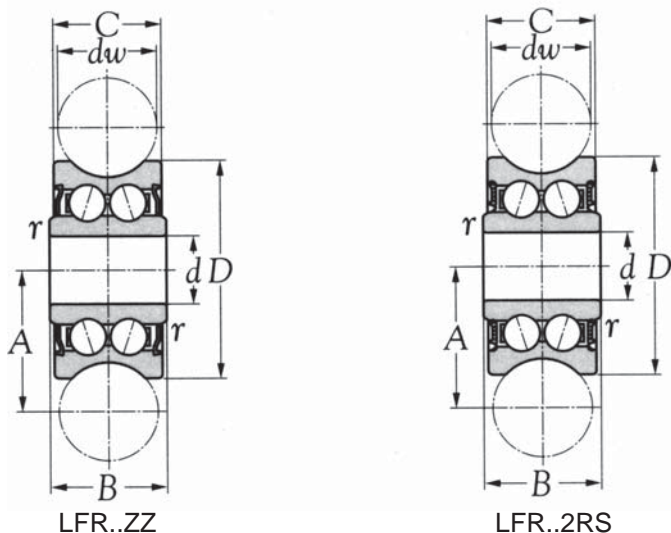


Galets de guidage à double rangées de billes avec étanchéité plastique



| Référence Type | Dimensions - mm | | | | | Vitesse limite Max. speed rpm | Charge basique Basic load N | | Poids Weight |
|-------------------|-----------------|-----|------|-----|------|-------------------------------------|-----------------------------------|--------|-----------------|
| | d | D | C | rs | d1 | Graisse Grease | C | Co | g |
| LR5303NPPU | 17 | 52 | 22,2 | 1,0 | 23,5 | 4 700 | 19 300 | 10 600 | 210 |
| LR5304NPPU | 20 | 62 | 22,2 | 1,1 | 29,0 | 4 500 | 25 100 | 13 800 | 340 |
| LR5305NPPU | 25 | 72 | 25,4 | 1,1 | 34,4 | 3 900 | 34 300 | 18 600 | 500 |
| LR5306NPPU | 30 | 80 | 30,2 | 1,1 | 41,4 | 3 100 | 47 200 | 25 200 | 670 |
| LR5307NPPU | 35 | 90 | 34,9 | 1,5 | 47,7 | 2 500 | 59 800 | 31 400 | 970 |
| LR5308NPPU | 40 | 100 | 36,5 | 1,5 | 52,4 | 2 300 | 78 000 | 39 900 | 1 200 |

Type LFR..



Galets de guidage profilés à double rangées de billes

| Référence Type | Dimensions - mm | | | | | | | Vitesse limite Max. speed tr/min | | Charge - Basic load N | | Poids Weight g | Axe | |
|----------------|-----------------|----|------|------|------|-------|-----|----------------------------------|-----------|-----------------------|--------|----------------|-------------------------|-----------------------|
| | d | dw | D | C | B | A | rs | Graisse Grease | Huile Oil | C | Co | | Concentrique Concentric | Excentrique Eccentric |
| LFR50/5-4 | 5 | 4 | 16 | 7 | 8 | 9 | 0,2 | 1 300 | 1 780 | 1 200 | 860 | 9 | RC5 | RE5-05 |
| LFR50/5-6 | 5 | 6 | 17 | 7 | 8 | 10,5 | 0,2 | 1 300 | 1 780 | 1 270 | 820 | 10 | RC5 | RC5 |
| LFR50/8-6 | 8 | 6 | 24 | 11 | 11 | 14 | 0,3 | 1 300 | 4 560 | 3 670 | 2 280 | 20 | RC8 | RE8-1 |
| LFR5201-10 | 12 | 10 | 35 | 15,9 | 15,9 | 20,65 | 0,3 | 5 100 | 10 200 | 8 500 | 5 100 | 80 | RC12 | RE12-1 |
| LFR5301-10 | 12 | 10 | 42 | 19 | 19 | 24 | 0,6 | 7 500 | 14 200 | 13 000 | 7 700 | 100 | R12/M12 | RE12-1/M12 |
| LFR5302-10 | 15 | 10 | 47 | 19 | 19 | 26,65 | 1 | 6 200 | 18 400 | 16 200 | 9 200 | 170 | RC15/RE15-1 | RE15-1 |
| LFR5201-12 | 12 | 12 | 35 | 15,9 | 15,9 | 21,75 | 0,3 | 5 100 | 10 000 | 8 400 | 5 000 | 85 | RC12X45A1 | RE12X45A1 |
| LFR5201-14 | 12 | 14 | 39,9 | 18 | 20 | 24 | 0,3 | 6 700 | 12 100 | 8 900 | 5 000 | 95 | RC12M12 | RE12M12 |
| LFR5204-16* | 20 | 16 | 52 | 20,6 | 22,6 | 31,5 | 0,6 | 12 100 | 16 600 | 16 800 | 9 500 | 230 | RC20X67A1 | RE20X67A1 |
| LFR5206-20* | 25 | 20 | 72 | 23,8 | 25,8 | 41 | 0,6 | 20 700 | 33 200 | 29 500 | 16 600 | 250 | RC25X82A1 | RE25X82A1 |
| LFR5206-25* | 25 | 25 | 72 | 23,8 | 25,8 | 43,5 | 0,6 | 23 100 | 32 800 | 29 200 | 16 400 | 250 | RC25X82A1 | RE25X82A1 |
| LFR5207-30* | 30 | 30 | 80 | 27 | 29 | 51 | 1 | 21 400 | 36 200 | 38 000 | 20 800 | 660 | RC30X95A1 | RE30X95A1 |
| LFR5208-40* | 40 | 40 | 98 | 36 | 38 | 62,5 | 1 | 55 000 | 58 000 | 54 800 | 29 000 | 1 360 | RC40X115A1 | RE40X115A1 |

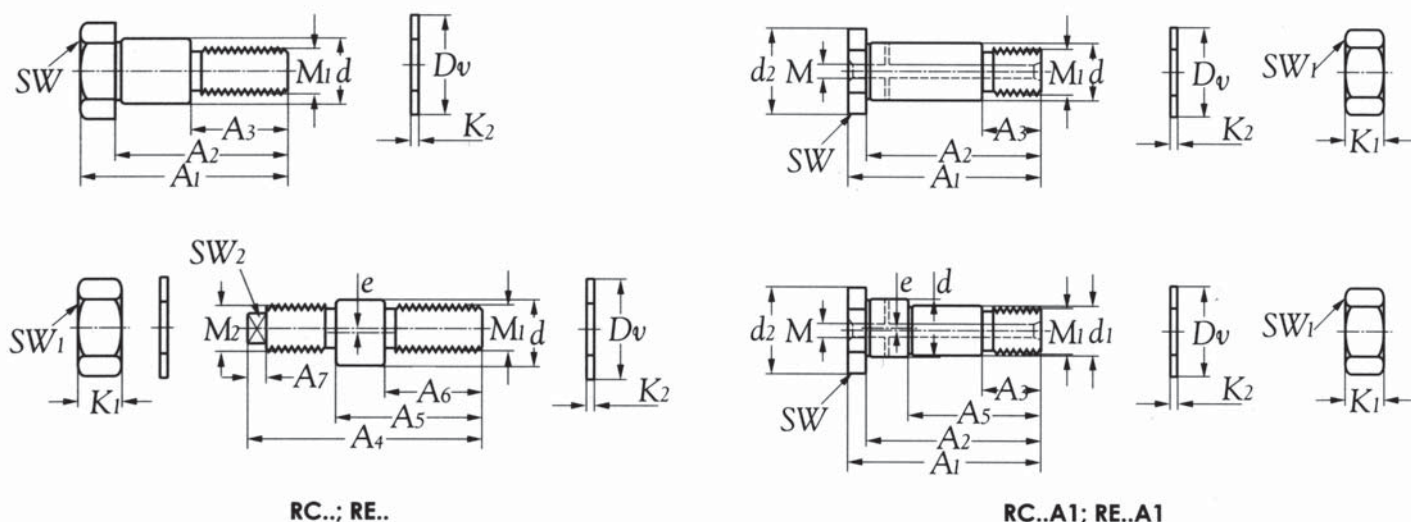
* Avec trou de lubrification sur la bague intérieure.
Remark : * Standard with lubrication hole on inner ring.

Exemple de désignation

| | | | | |
|----------------------------|----------------|------|----|----|
| Type | LFR | 5204 | 16 | ZZ |
| Dimensions | Dimension code | | | |
| Ø de l'arbres | Shaft Ø | | | |
| 2RS : Etanchéité plastique | Plastic seal | | | |
| KDD : Etanchéité tôle | Steel seals | | | |

AXE DU GALET PROFILE - MOUNTING BOLTS AND STUDS

Type RC et RE

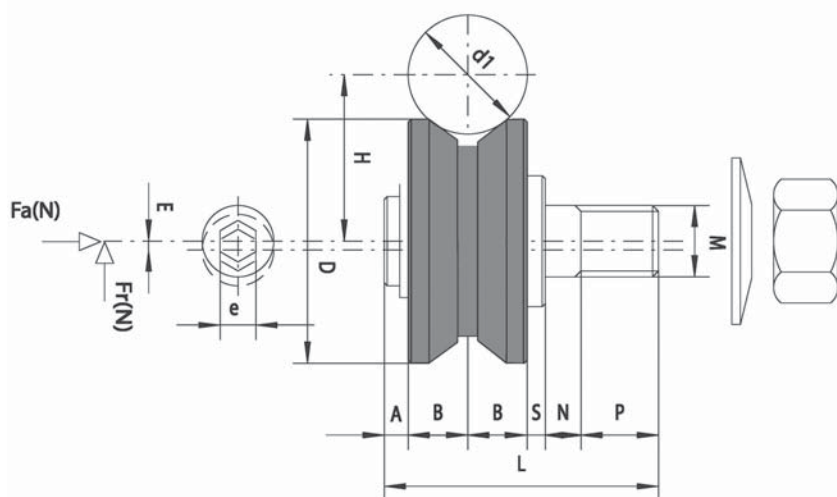


| Référence Type | | Dimensions - mm | | | | | | | | | |
|-------------------------|-----------------------|-----------------|-------|------|------|------|------|-----|----|----|---------|
| Concentrique Concentric | Excentrique Eccentric | A1 | A2 | A3 | A4 | A5 | A6 | A7 | d1 | d2 | M1 |
| RC5 | RE5-05 | 19,5 | 16,0 | 9,5 | 20,5 | 15,0 | 9,0 | - | - | - | M4 |
| RC8 | RE8-1 | 28,3 | 24,3 | 14,0 | 33,2 | 22,0 | 13,7 | 3,5 | - | - | M8 |
| RC12 | RE12-1 | 43,0 | 36,0 | 22,0 | 50,0 | 33,5 | 19,5 | 5,0 | - | - | M10 |
| RC12/M12 | RE12-1/M12 | 50,8 | 43,8 | 24,0 | 57,0 | 41,0 | 24,0 | 5,0 | - | - | M12 |
| RC15 | RE15-1 | 50,8 | 43,8 | 26,0 | 57,0 | 41,0 | 24,0 | 5,0 | - | - | M12 |
| RC12X45A1 | RE12X45A1 | 50,0 | 45,0 | 16,0 | - | 30,0 | - | - | 10 | 20 | M10x1,5 |
| RC20X67A1 | RE20X67A1 | 75,0 | 67,0 | 23,0 | - | 45,0 | - | - | 17 | 30 | M16x1,5 |
| RC25X82A1 | RE25X82A1 | 92,0 | 82,0 | 30,0 | - | 57,0 | - | - | 22 | 40 | M20x1,5 |
| RC30X95A1 | RE30X95A1 | 107,0 | 95,0 | 32,0 | - | 67,0 | - | - | 27 | 45 | M24x1,5 |
| RC40X107A1 | RC40X107A1 | 117,0 | 107,0 | 42,0 | - | 72,0 | - | - | 36 | 55 | M30x1,5 |
| RC40X115A1 | RC40X115A1 | 125,0 | 115,0 | 42,0 | - | 72,0 | - | - | 36 | 55 | M30x1,5 |

| Référence Type | | Dimensions - mm | | | | | | | | | Poids Weight |
|-------------------------|-----------------------|-----------------|------|-----|----|----|-----------------|-----------------|------|-----|--------------|
| Concentrique Concentric | Excentrique Eccentric | M2 | K1 | K2 | Dv | SW | SW ₁ | SW ₂ | e | M | g |
| RC5 | RE5-05 | M4 | 2,9 | - | - | 3 | 7 | 2 | 0,50 | - | 10 |
| RC8 | RE8-1 | M8x0,75 | 4,0 | 1,0 | 14 | 13 | 13 | 2 | 1,00 | - | 20 |
| RC12 | RE12-1 | M10 | 8,0 | 1,8 | 21 | 17 | 17 | 5 | 1,00 | - | 40 |
| RC12/M12 | RE12-1/M12 | M12 | 6,5 | 1,8 | 19 | 17 | 17 | 6 | 1,00 | - | 60 |
| RC15 | RE15-1 | M12 | 6,5 | 1,8 | 21 | 19 | 19 | 6 | 1,00 | - | 60 |
| RC12X45A1 | RE12X45A1 | - | 8,0 | 2,0 | 21 | 17 | 17 | 6 | 0,75 | 5,9 | 40 |
| RC20X67A1 | RE20X67A1 | - | 13,0 | 3,0 | 30 | 27 | 24 | - | 1,00 | 5,9 | 200 |
| RC25X82A1 | RE25X82A1 | - | 16,0 | 3,0 | 37 | 36 | 30 | - | 1,00 | 5,9 | 400 |
| RC30X95A1 | RE30X95A1 | - | 19,0 | 4,0 | 44 | 41 | 36 | - | 1,00 | 5,9 | 620 |
| RC40X107A1 | RC40X107A1 | - | 24,0 | 4,0 | 56 | 46 | 46 | - | 1,00 | 5,9 | 1 100 |
| RC40X115A1 | RC40X115A1 | - | 24,0 | 4,0 | 56 | 46 | 46 | - | 1,00 | 5,9 | 1 200 |

GALETS A DOUBLE RANGÉES DE BILLES - TRACK ROLLERS

Type RV



Galets à double rangées de billes avec une bague extérieure en "V"

| Référence Type | Dimensions - mm | | | | | | | | | | | | Charges Basic Load N | | Vitesse limite Max. speed rpm | | Poids Weight g |
|-------------------|-----------------|------|-----|----|------|----|----|------|----|-----|---|----|----------------------------|--------------|-------------------------------------|--------------|----------------------|
| | A | B | S | N | P | L | M | H | D | E | e | d1 | Axial Fa | Radial Fr | Graisse Grease | Huile Oil | |
| RV22C | 3 | 5,5 | 3,0 | 4 | 5,5 | 26 | 6 | 14,5 | 22 | - | 3 | 10 | 292 | 292 | 2 350 | 4 150 | 28 |
| RV22E | 3 | 5,5 | 3,0 | 4 | 5,5 | 26 | 6 | 14,5 | 22 | 1,5 | 3 | 10 | 292 | 292 | 2 350 | 4 150 | 28 |
| RV30E | 2 | 7,0 | 2,5 | 6 | 8,0 | 33 | 8 | 18,1 | 30 | - | 4 | 10 | 387 | 960 | 11 000 | 19 800 | 69 |
| RV30C | 2 | 7,0 | 2,5 | 6 | 8,0 | 33 | 8 | 18,1 | 30 | 1,5 | 4 | 10 | 387 | 960 | 11 000 | 19 800 | 69 |
| RV38E | 3 | 8,5 | 2,5 | 8 | 12,0 | 42 | 10 | 22,3 | 38 | - | 5 | 10 | 552 | 1 225 | 10 200 | 17 900 | 145 |
| RV38C | 3 | 8,5 | 2,5 | 8 | 12,0 | 42 | 10 | 22,3 | 38 | 2 | 5 | 10 | 552 | 1 225 | 10 200 | 17 900 | 145 |
| RV41E | 3 | 10,0 | 5,0 | 6 | 13,0 | 47 | 12 | 28,0 | 41 | - | 6 | 20 | 836 | 1 680 | 17 200 | 31 500 | 190 |
| RV41E | 3 | 10,0 | 5,0 | 6 | 13,0 | 47 | 12 | 28,0 | 41 | 2 | 6 | 20 | 836 | 1 680 | 17 200 | 31 500 | 190 |
| RV58C | 6 | 12,5 | 4,0 | 11 | 13,0 | 59 | 16 | 35,0 | 58 | - | 6 | 20 | 1 600 | 3 500 | 47 000 | 86 000 | 460 |
| RV58E | 6 | 12,5 | 4,0 | 11 | 13,0 | 59 | 16 | 35,0 | 58 | 2,5 | 6 | 20 | 1 600 | 3 500 | 47 000 | 86 000 | 460 |

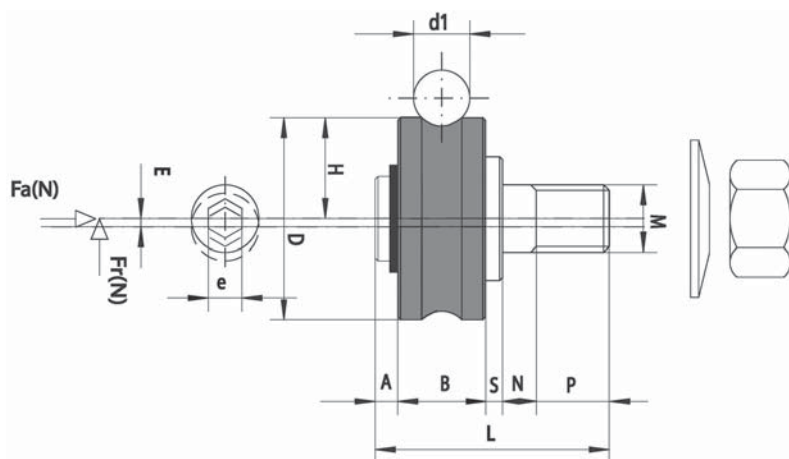
RV..E : Excentrique *Eccentric*
 RV..C : Concentrique *Concentric*

GALETS A DOUBLE RANGÉES DE BILLES PROFILÉS - TRACK ROLLERS

Types RPC et RPE



Galets à double rangées de billes profilé en arc gothique avec axe



| Référence Type | Dimensions - mm | | | | | | | | | | | | Charges Basic Load N | | Vitesse limite Max. speed rpm | | Poids Weight g |
|-------------------|-----------------|------|-----|----|------|----|----|-------|----|------|-----|----|----------------------------|--------------|-------------------------------------|--------------|----------------------|
| | A | B | S | N | P | L | M | H | D | E | e | d1 | Axial Fa | Radial Fr | Graisse Grease | Huile Oil | |
| RPC17 | 1.5 | 7.0 | 1.5 | 5 | 5.5 | 23 | 5 | 10.50 | 17 | - | 2.5 | 6 | 250 | 520 | 1 250 | 1 700 | 15 |
| RPE17 | 1.5 | 7.0 | 1.5 | 5 | 5.5 | 23 | 5 | 10.50 | 17 | 0.5 | 2.5 | 6 | 250 | 520 | 1 250 | 1 700 | 15 |
| RPC24 | 3 | 11.0 | 2 | 6 | 7.0 | 29 | 8 | 14.00 | 24 | - | 4.0 | 6 | 820 | 1 590 | 1 250 | 4 350 | 42 |
| RPE24 | 3 | 11.0 | 2 | 6 | 7.0 | 29 | 8 | 14.00 | 24 | 0.5 | 4.0 | 6 | 820 | 1 590 | 1 250 | 4 350 | 42 |
| RPC35 | 3.2 | 15.9 | 2 | 10 | 13.0 | 44 | 10 | 20.65 | 35 | - | 5.0 | 10 | 1 090 | 2 390 | 4 900 | 9 700 | 120 |
| RPE35 | 3.2 | 15.9 | 2 | 10 | 13.0 | 44 | 10 | 20.65 | 35 | 0.75 | 5.0 | 10 | 1 090 | 2 390 | 4 900 | 9 700 | 120 |

RPE : Excentrique Eccentric
 RPC : Concentrique Concentric