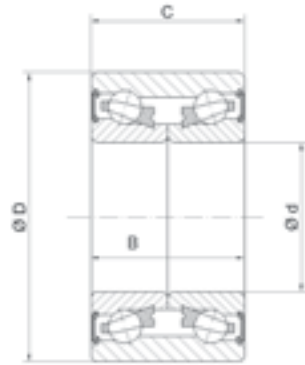
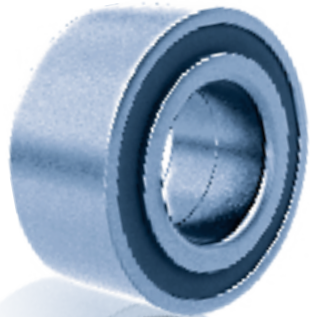


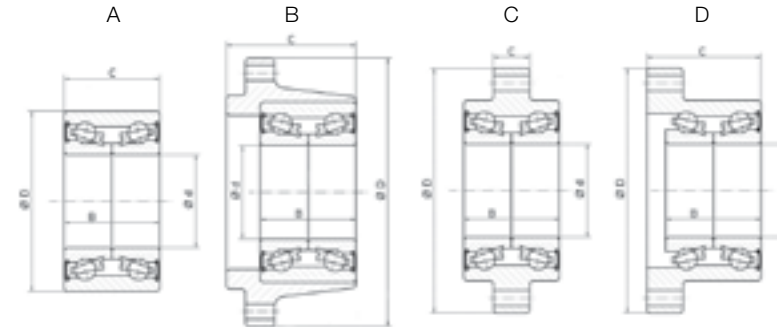
05.1

SPECIAL DOUBLE ROW ANGULAR CONTACT BALL BEARINGS  
 RODAMIENTOS DE BOLAS DE DOBLE HILERA DE CONTACTO ANGULAR ESPECIALES



Fersa	d (mm)	D (mm)	C / B (mm)	TYPE
<b>A</b> F 16108	40,000	84,060	39,700 / 38,800	A
F 16109	49,000	88,000	46,000	A
<b>A</b> F 16110	39,000	72,000	37,000	A
F 16117	38,000	73,000	40,000	A
F 16118	43,000 / 45,000	85,000	37,000	A
F 16121	45,000	88,020	39,000	A
F 16123	45,000	86,000	39,000	A
F 16124	38,000	72,000	40,000	A
<b>A</b> F 16128	45,000	86,000	39,000	A
F 16129	25,000	52,000	42,000	A
F 16193	43,000	78,000	44,000	A
F 16194	42,000	76,000	39,000	A
F 16195	42,000	76,000	37,000 / 40,000	A
F 16196	43,000	76,000	43,000	A
F 16197	42,000	76,000	33,000	A
F 16198	40,000	76,000	33,000	A
F 16199	47,000	81,000	53,000	A

Type / Tipo



Fersa	CROSS REF.		
<b>A</b> F 16108	SNR XGB 40492 S01 P		
F 16109	SNR GB 40279S01 NSK 49BWD01BCA116		
<b>A</b> F 16110	SKF BAH 0106 D SNR XGB 35447		
F 16117	NTN DE 08A48LLCS46PX1 / L260 NATIONAL 510015		
F 16118	SKF BAHB 636214 A		
F 16121	SNR GB 40300		
F 16123	SNR GB 40575 S02		
F 16124	SNR GB 35275 NACHI 38BVV07 10G		
<b>A</b> F 16128	SNR XGB 40575 S02 P		
F 16129	SNR GB 35098 NTN AU 0501		
F 16193	NTN AU 0933 NATIONAL 510089		
F 16194	NSK 27 BWK 04D3 NATIONAL 513058		
F 16195	SKF BAHB309796A FAG 547059 KOYO DAC4276W NATIONAL 513006		
F 16196	NSK 43 BWD 12A JB 5C01 NATIONAL 510060		
F1 6197	NATIONAL 510057		
F 16198	NATIONAL 510032		
F 16199	KOYO DAC4781W NATIONAL 510028		

**A** Active ABS / ABS activo

**A** Active ABS / ABS activo