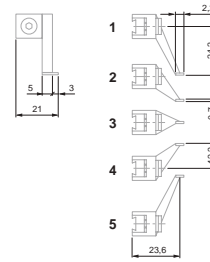


## SPRINGS, PNEUMATIC ACTUATORS, HOLDERS, OFF-SET INSERTS, FOR FMS PROBE

### Inserts with Offset Measuring Faces, for FMS Probes

No	=	A	Drawing
02630047	VBM offset insert	1	
02630048	VBN offset insert	2	
02630049	VBO offset insert	3	
02630050	VBP offset insert	4	
02630051	VBQ offset insert	5	

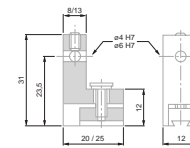
Inserts with offset faces for FMS probes



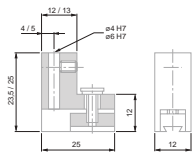
Packed suitable for transport

### Fixed Holder, for FMS Probe

No	=	∅	A	A	Number	Position
02630042	VBH fixed holder	4	2	Horizontal		
02630043	VBJ fixed holder	4	1	Vertical		
02630045	VBK fixed holder	6	2	Horizontal		
02630046	VBL fixed holder	6	1	Vertical		



02630042  
02630045



03230043  
03230046



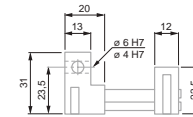
Packed suitable for transport

### Holder with Fine Adjustment for FMS Probe

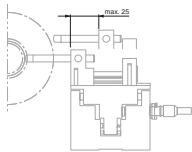
Helps greatly for setting a FMS probe.

Setting and locking screws remain accessible even when several probes are mounted side by side.

No	mm	∅	A	A	Number	Position
02630053	25	4	2	Horizontal		
02630055	25	4	1	Vertical		
02630052	25	6	2	Horizontal		
02630054	25	6	1	Vertical		



02630052  
02630053



02630053



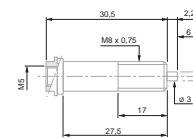
Holder width: 12 mm



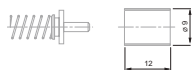
Packed suitable for transport

### Auxiliary Springs and Pneumatic Retraction Jack, for FMS Probe

No	=	Hand	N
03260440	Pneumatic jack	11 (for 4 bars)	
03260441	Spring element	0,4	
03260442	Spring element	0,63	
03260443	Spring element	1,0	
03260444	Spring element	1,6	
03260445	Spring element	2,0	
03260446	Spring element	2,5	
03260447	Spring element	4,0	



Pneumatic cylinder (jack) for FMS probe



Auxiliary spring element for FMS probe



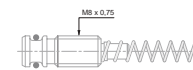
All values given in the table for the measuring force equal nominal values at electrical zero; max. deviation  $\pm 25\%$ . Valid for probing movements executed horizontally as well as in static measuring.



Packed suitable for transport

### Spring Set with Specific Measuring Force, for FMS Probe

No	=	Hand	Measuring force, N
03260448	Spring set red	0,4	
03260449	Spring set yellow	0,63	
03260450	Spring set green	1,0	
03260451	Spring set blue	1,6	
03260452	Spring set brown	2,5	
03260453	Spring set black	4,0	



Spring set for measuring force for FMS probe



All values given in the table for the measuring force equal nominal values at electrical zero; max. deviation  $\pm 25\%$ . Valid for probing movements executed horizontally as well as in static measuring mode.



Packed suitable for transport