

Sets of Accessories for Height Gauges



Shipping packaging



Declaration of conformity



00760232 Starter accessory kit with 4 elements for TESA Height Gauges

CONSISTING OF:

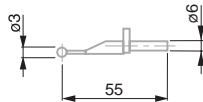
00760061 Probe insert with a 3 mm dia. carbide ball tip

00760075 Probe insert with a carbide disc tip $E = 2 \text{ mm} / \varnothing 14 \text{ mm}$ for grooves, slots, centering shoulders etc.

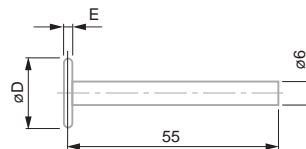
00760082 2 mm dia. probe insert with a small cyl. carbide face

00760094 Probe inserts with a stainless steel shank, hardened. Also with one flat and one spherical carbide measuring face. Interchangeable shank.

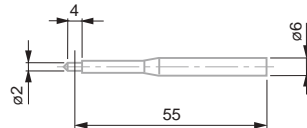
059215 Plastic box



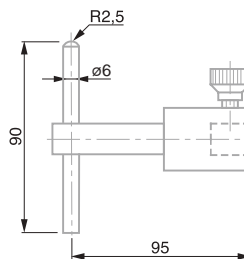
00760061



00760075



00760082



00760094

