

The contents of this publication are the copyright of the publisher and may not be reproduced (even extracts) unless prior written permission is granted. Every care has been taken to ensure the accuracy of the information contained in this publication but no liability can be accepted for any loss or damage whether direct, indirect or consequential arising out of the use of the information contained herein.

Le contenu de cette publication est soumis au copyright de l'éditeur et sa reproduction, même partielle, est interdite sans autorisation écrite préalable. Le plus grand soin a été apporté à l'exactitude des informations données dans cette publication mais SKF décline toute responsabilité pour les pertes ou dommages directs ou indirects découlant de l'utilisation du contenu du présent document.

Nachdruck, auch auszugsweise, nur mit unserer vorherigen schriftlichen Genehmigung gestattet. Die Angaben in dieser Druckschrift wurden mit größter Sorgfalt auf ihre Richtigkeit hin überprüft. Trotzdem kann keine Haftung für Verluste oder Schäden irgendwelcher Art übernommen werden, die sich mittelbar oder unmittelbar aus der Verwendung der hier enthaltenen Informationen ergeben.

El contenido de esta publicación es propiedad de los editores y no puede reproducirse (incluso parcialmente) sin autorización previa por escrito. Se ha tenido el máximo cuidado para garantizar la exactitud de la información contenida en esta publicación, pero no se acepta ninguna responsabilidad por pérdidas o daños, ya sean directos, indirectos o consecuentes, que se produzcan como resultado del uso de dicha información.

La riproduzione, anche parziale, del contenuto di questa pubblicazione è consentita soltanto previa autorizzazione scritta della SKF. Nella stesura è stata dedicata la massima attenzione al fine di assicurare l'accuratezza dei dati, tuttavia non si possono accettare responsabilità per eventuali errori od omissioni, nonché per danni o perdite diretti o indiretti derivanti dall'uso delle informazioni qui contenute.

O conteúdo desta publicação é de direito autoral do editor e não pode ser reproduzido (nem mesmo parcialmente), a não ser com permissão prévia por escrito. Todo cuidado foi tomado para assegurar a precisão das informações contidas nesta publicação, mas nenhuma responsabilidade pode ser aceita por qualquer perda ou dano, seja direto, indireto ou consequente, como resultado do uso das informações aqui contidas.

本出版物内容的著作权归出版者所有且未经事先书面许可不得被复制（甚至引用）。我们已采取了一切注意措施以确定本出版物包含的信息准确无误，但我们不对因使用此等信息而产生的任何损失或损害承担任何责任，不论此等责任是直接、间接或附随性的。

Содержание этой публикации является собственностью издателя и не может быть воспроизведено (даже частично) без предварительного письменного разрешения. Несмотря на то, что были приняты все меры по обеспечению точности информации, содержащейся в настоящем издании, издатель не несет ответственности за любой ущерб, прямой или косвенный, вытекающий из использования вышеуказанной информации.



SKF Maintenance Products

© SKF is a registered trademark of the SKF Group.
© SKF Group 2015/03

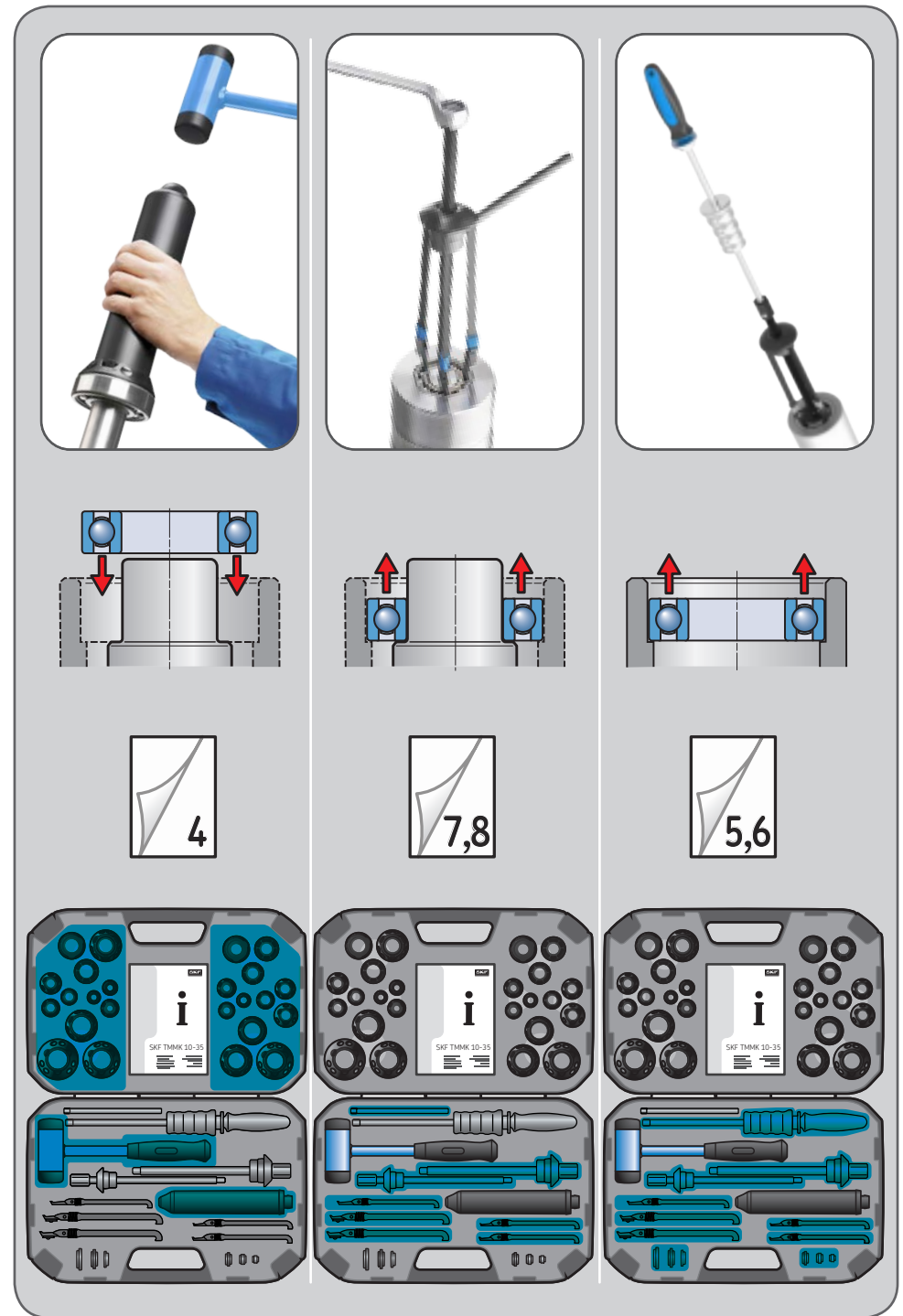
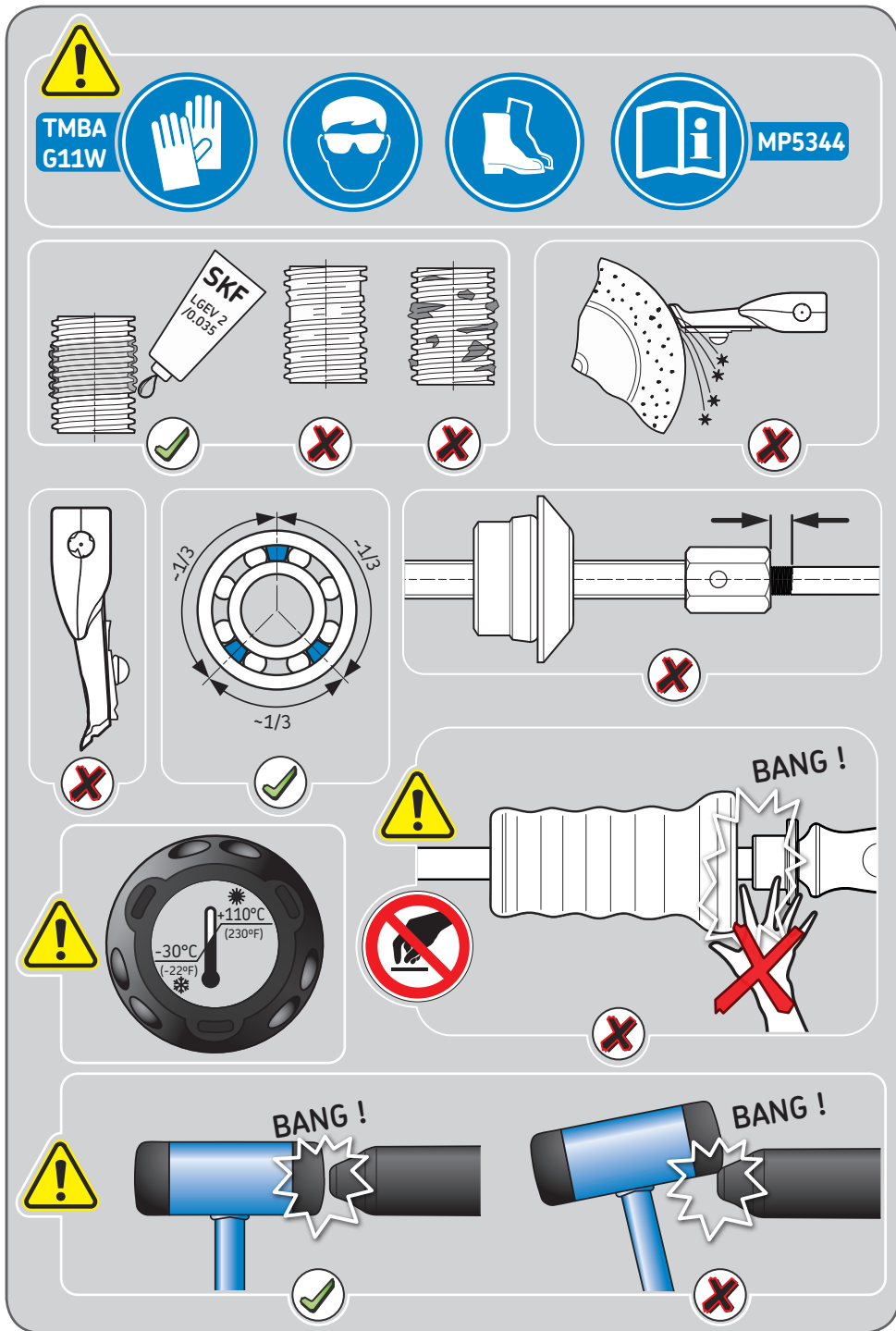
www.mapro.skf.com
www.skf.com/mount

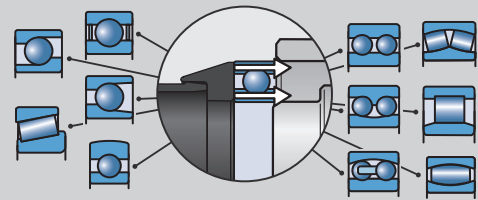
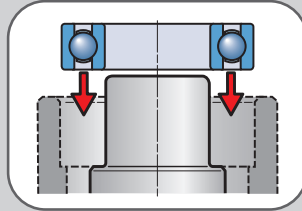
MP5344

SKF TMMK 10-35

Instructions for use
Mode d'emploi
Bedienungsanleitung
Instrucciones de uso

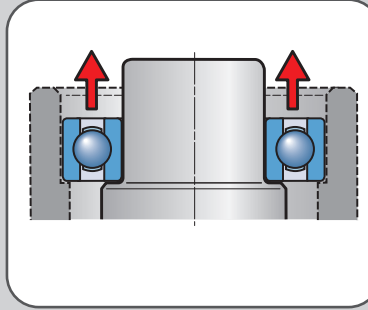
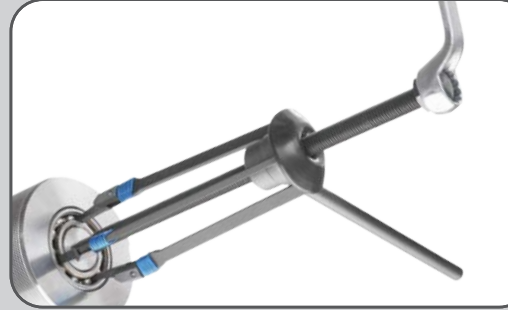
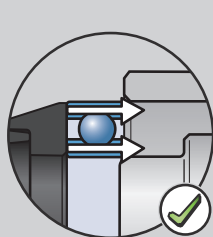
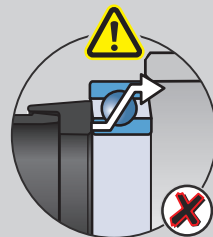
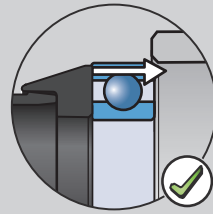
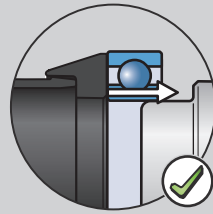
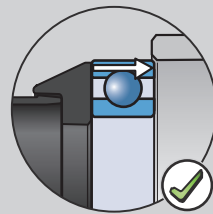
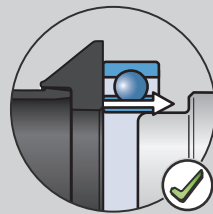
Manuale d'istruzioni
Instruções de uso
使用说明书
Инструкция по эксплуатации



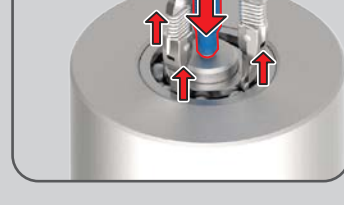
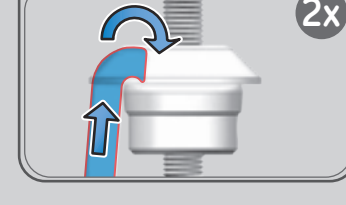
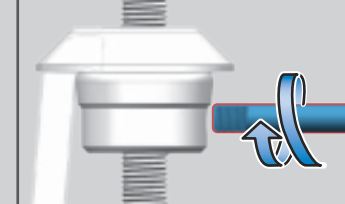
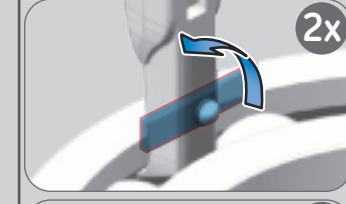
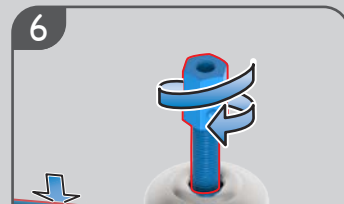
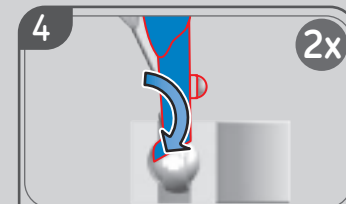
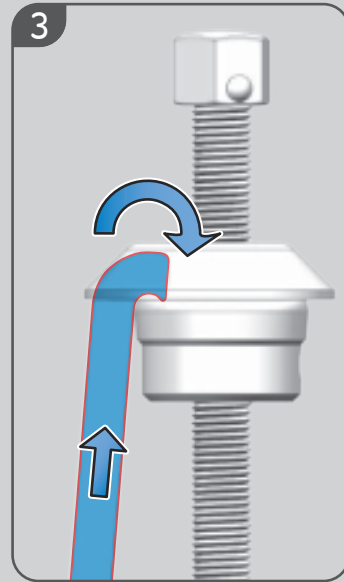
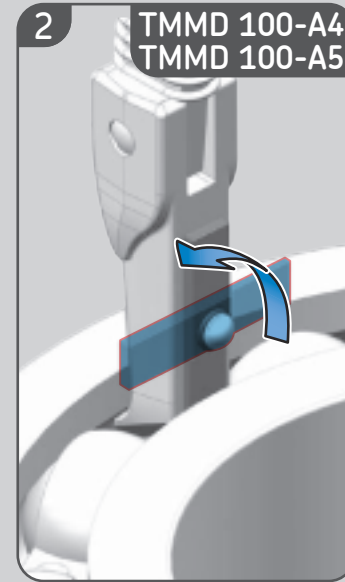
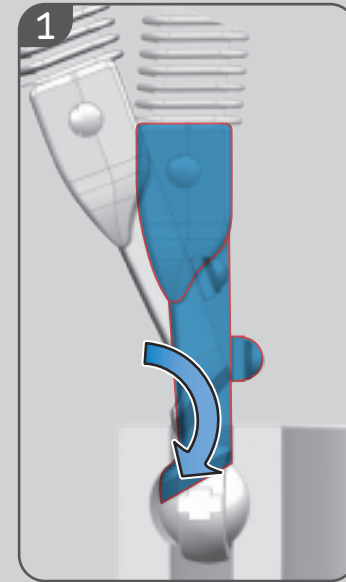


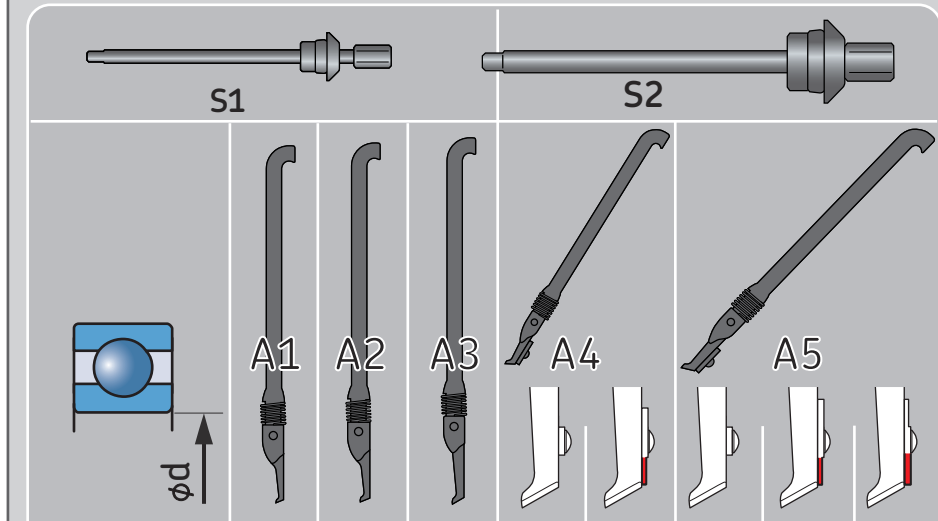
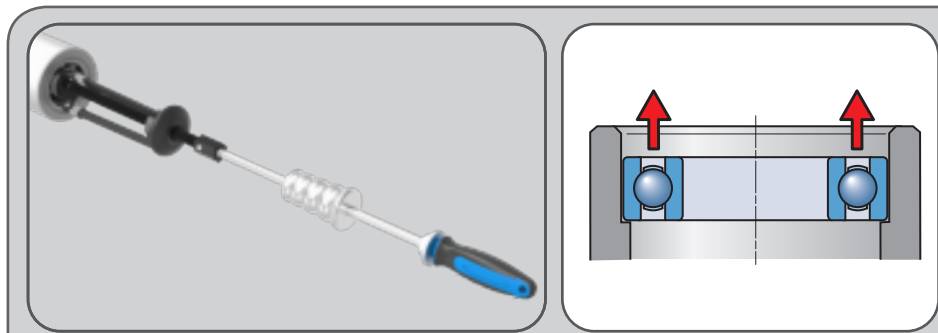
A		10-26	10-30	10-35	12-28	12-32	12-37	15-32	15-35	15-42	17-35	17-40	17-47
60..		6000			6001			6002			6003		
62..		629	6200		6201			6202			6203		
63..			6300		6301			6302					6303
160..							16002			16003			
161..		16100		16101									

B		20-42	20-47	20-52	25-47	25-52	25-62	30-55	30-62	30-72	35-62	35-72	35-80
60..		6004			6005			6006			6007		
62..			6204		62/22	6205		62/28	6206			6207	
63..			6304		63/22	6305		63/28	6306				6307
64..					6403			6404					6405
160..		16004			16005			16006			16007		

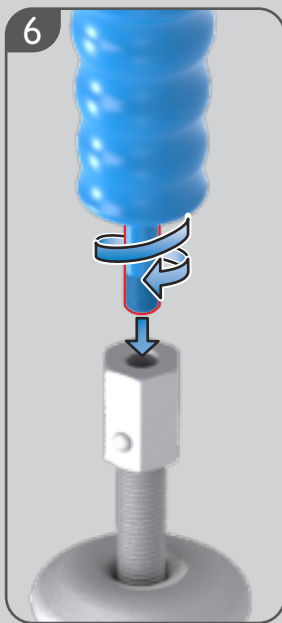
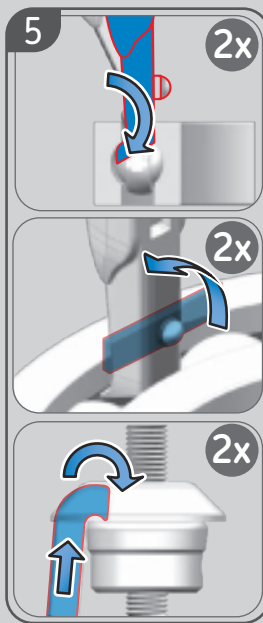
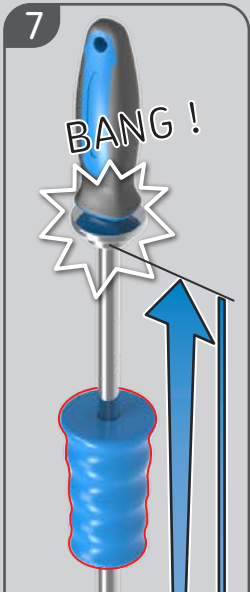
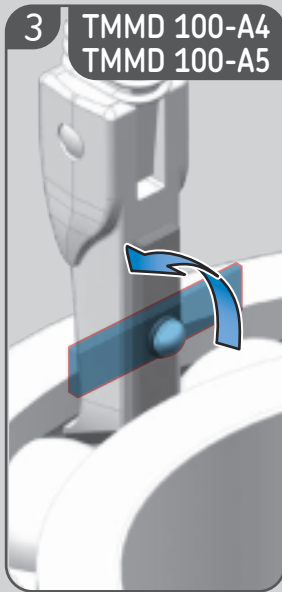
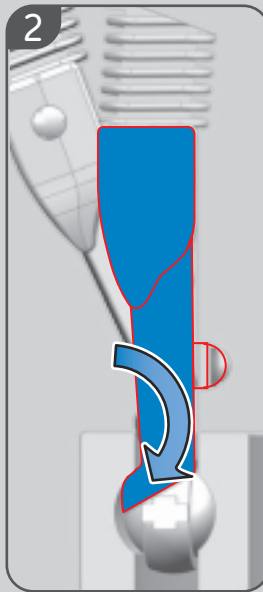
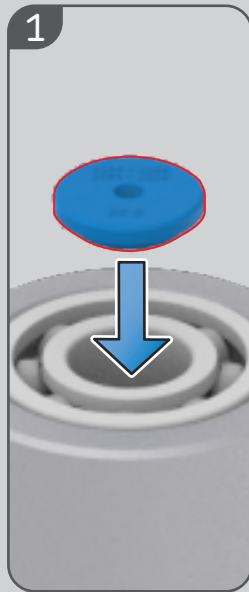


	S1			S2		
	A1	A2	A3	A4	A5	
60..	6000 6001 6002 6003	6004 6005 6006	6007 6008 6009 6010		6011 6012 6013	6014 6015 6016 6017
62..	6200	6201 6202 6203	6204 6205 62/22	6206 62/28		6207 6208 6209 6210 6211
63..			6300 6301 6302	6303 6304	63/22 63/28	6305 6306 6307
64..						6403
160..	16002 16003		16011			
160..	16100 16101					





	10	6000 6200 16100		6300			
	12	6001 16101	6201	6301			
	15	6002 16002	6202	6302			
	17	6003 16003	6203	6303			6403
	20		6004	6204	6304		
	22			62/22	63/22		
	25		6005	6205			6305
	28				62/28		63/28
	30		6006	6206			6306
	35			6007			6207
							6307



$A = 228 \text{ mm} / B = 235 \text{ mm}$
 $A = 210 \text{ mm} / B = 210 \text{ mm}$

TMFT 36-A
 TMFT 36-B
 $A = 18 \text{ mm}$
 $B = 37 \text{ mm}$
 $A = 25 \text{ mm}$
 $B = 45 \text{ mm}$

	TMFT 36-10/12	TMFT 36-15/17	TMFT 36-20/25	TMFT 36-30/35
20 mm (0.8 in)	A10-26	A15-32	B20-42	B30-55
	A10-30	A15-35	B20-47	B30-62
	A10-35	A15-42	B20-52	B30-72
	A12-28	A17-35	B25-47	B35-62
	A12-32	A17-40	B25-52	B35-72
	A12-37	A17-47	B25-62	B35-80
	AXX-YY		BXX-YY	

315 mm
 0,9 kg (2.0 lb)
 TMFT 36-H
 7,6 kg (16.8 lb)
 TMMK 10-35
 110 mm (4.3 in)
 360 mm (14.2 in)
 530 mm (20.9 in)

SERVICE
 SKF

$S1 = 286 \text{ mm} / S2 = 298 \text{ mm}$
 $S1 = 19 \text{ mm}$
 $S2 = 24 \text{ mm}$

417 mm
 1,0 kg (2.2 lb)