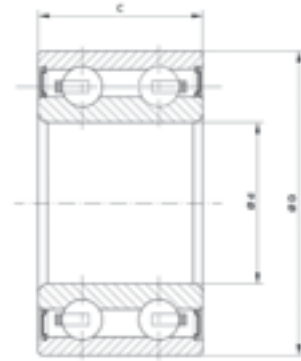
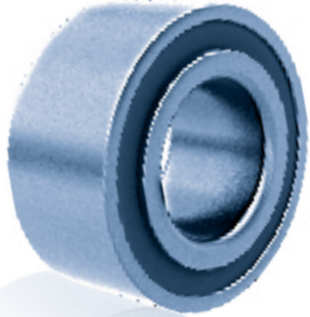


05.4

AIR CONDITIONING
AIRE ACONDICIONADO



Fersa	d (mm)	D (mm)	C / B (mm)
F 16097	30,000	52,000	22,000
F 16098	30,000	55,000	23,000
F 16099	35,000	50,000	20,000
F 16100	35,000	55,000	20,000
F 16101	35,000	52,000	22,000
F 16102	40,000	62,000	24,000
F 16103	40,000	62,000	20,625
F 16104	30,000	62,000	27,000
F 16189	40,000	57,000	24,000
F 16190	40,000	62,000	20,600 / 24,000

Fersa	CROSS REF.	COMPRESSOR TYPE
F 16097	NACHI NSK KOYO NTN 30 BG 05S 2G - 2DS 30 BD 5222 FX DAC 3052- 32 RR9 DS 10Z	Toyota, Daihatsu, HINO, Honda, Mitsubishi, Mazda, FUJI, Isuzu, Jaguar, Chrysler, BMW USA, GM, Honda USA, John Deere, Rover, Toyota UK, Fiat, Hyundai, Kia, Mercedes Benz, Porsche.
F 16098	NACHI NSK KOYO 30 BG 05S 5G - 2DS 30 BD 40 A - T1Z DDF1 30 BG 05 S5G - 2DST2	Ford, Hyundai, Kia, Mitsubishi
F 16099	NACHI NSK 35 BG 05S 7G 2DS 35 BD 5020 DUK	Ford, Mitsubishi, Nissan, Honda
F 16100	NACHI NSK KOYO NTN 35 BG 05S 10G 2DL 35 BD 219T - 1Z DDU K8 DAC 3555 RD 3H - 83 A 694 30 BG 04 S15G - 2DST	GM, Nissan, Chrysler, Kia, Hyundai, Honda
F 16101	NACHI NSK 35 BG 52 22 - 2DS 35 BD 52 22 DF X7	Mercedes Benz, Audi, Volkswagen
F 16102	NACHI NSK KOYO NTN 40 BG S1 1G - 2DS DF 0865 83 A 5518 40 BD 219T 12 DDU	Toyota, Daihatsu, Mitsubishi, Rover, Volkswagen BRASIL, Fiat BRASIL
F 16103	NACHI NSK 40 BG 620 20 - 2DL 40 BD 49V	GM , Daewoo
F 16104	NACHI KOYO NTN 30 BG S 12G - 2DS BD 30 - 11 A 5206 #37	Chrysler
F 16189	NACHI NSK KOYO NTN 40 BG 05S 2G - 2DS 40 BD 45 T12 DDU 40 BD 45 T12 2TS2 - DF 0882 LL BCS	Mitsubishi, Volkswagen
F 16190	NACHI NSK KOYO NTN 40 BG S 12G - 2DS 40 BD 49 AWT12 DDU 40 BD 49 AW 5908 - 2RSWE	Ford, Hino, Mazda, Chrysler

